



Bulimba State School viewed from Bulimba Memorial Park 2015

BULIMBA STATE SCHOOL BRISBANE

HERITAGE REPORT: Section on history

Client: Department of Education and Training
Master Site Number: 20017
Address: 261 Oxford Street, Bulimba

Marie-Anne Ammons Architect Pty Ltd

4 June 2015

Table of Contents

1	HISTORY	1
1.1	The suburb of Bulimba	1
1.2	Early development of the Bulimba School.....	1
1.2.1	New Infants' School (Block C).....	7
1.2.2	The grounds.....	8
1.2.3	Roadways	9
1.3	The Interwar School (Block A)	9
1.4	Development 1940s – present.....	15
1.4.1	Block A extensions.....	15
1.4.2	Repair of Block C	16
1.4.3	Construction of Block B	17
1.4.4	Development of the grounds after 1938.....	18
1.4.5	Recent changes	22
2	APPENDICES.....	24
2.1	Existing buildings	24
2.2	Chronology.....	26
2.3	Specification for Block A	48
2.4	Bibliography.....	51

1 HISTORY

1.1 The suburb of Bulimba

European settlement of land at Bulimba occurred before Separation from New South Wales. The first lots that were advertised for sale in 1849 were fertile land along the river facing west and extending north to Bulimba Point. By the 1860s the Bulimba area was predominantly settled by farmers on small holdings who kept livestock and sold dairy and agricultural produce to the town.¹ Experimental crops like cotton and sugar were also grown. Local industries developed along the river including boat building, wharfage, a candleworks and soap factory, a brewery and a chemical factory.

Population grew in common with Brisbane-wide trends and with improved access provided by the railway in 1889, the tram system along Riding Road in the 1920s and 1930s and, more recently, the city cat ferries which have made Bulimba popular with commuters. Growth has been particularly high over the last 20 years with the conversion of industrial land for housing and subdivision of the larger suburban lots. This trend is expected to continue.

1.2 Early development of the Bulimba School

The earliest National Schools² were established by a Board of National Education appointed in 1848 by the Governor of New South Wales. When Queensland became a separate colony, the system of National Schools continued under a Queensland Board of General Education established under the *Education Act of 1860*. The Board assisted with the construction of new schools, allocated annual grants and employed teachers. Initially communities were required to raise one third of the cost of establishment but this was relaxed in 1864.

A five acre site for a National School at Bulimba was surveyed in 1860 on part of Portion 67. When Portion 67 was sold to G [George?] Harris, the first owner, in 1862 the land for the school was excluded from the sale. Portion 67 is shown on a plan dated 1858 and was slightly under 50 acres³. It was mostly steep with poor quality soil which would have been less attractive for farming.

Bulimba National School was established in 1866 and builder Michael Robertson was engaged to construct a schoolroom and residence for £230. The buildings were completed in 1867. At this time rural schools were built of timber and metropolitan schools were generally of brick. An architect for Bulimba School has not been identified but may have been Richard Suter, who was working for Benjamin Backhouse at the time and is credited with developing timber school buildings which had studs on the outside of the walls and the lining boards facing the rooms⁴.

In 1875 the *Education Act* provided for National Schools to become State Schools administered by the Department of Public Instruction. At this time expenditure at Bulimba National School of

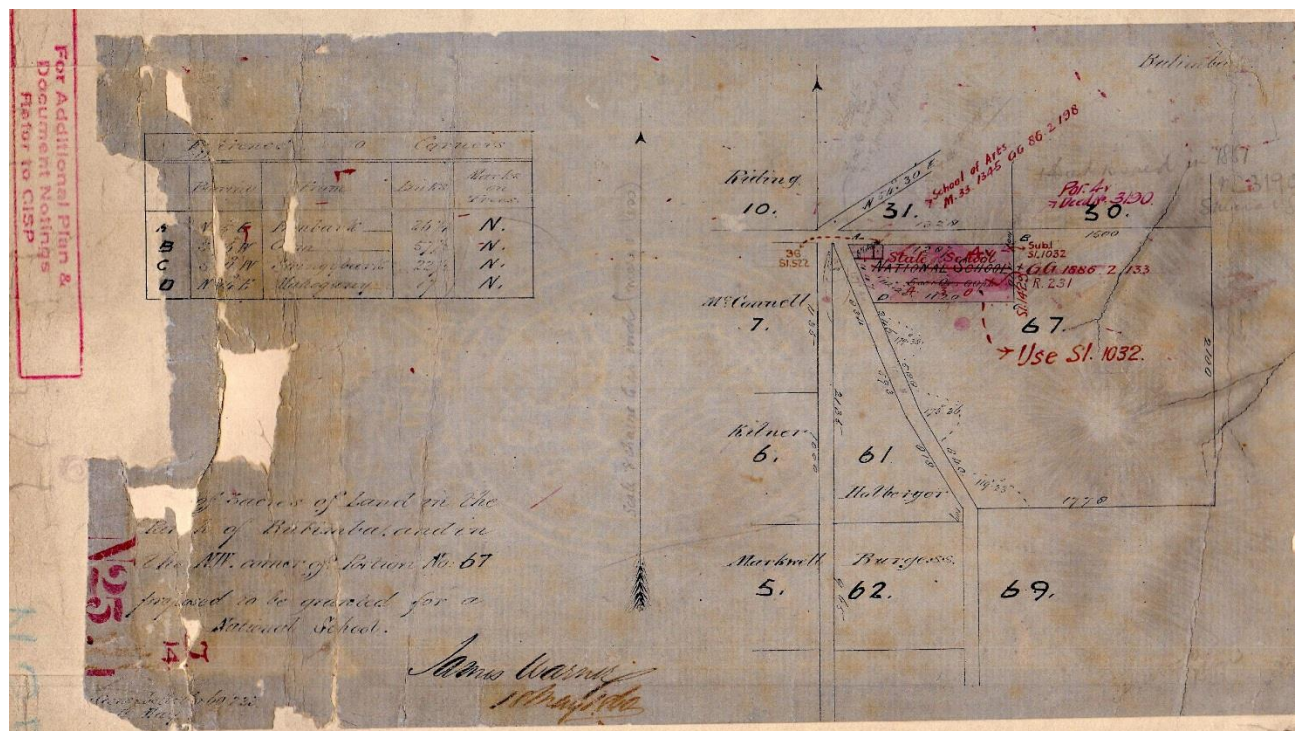
¹ *Morton Bay Courier* 16 Feb 1859 p3

² Burmester, Paul, Margaret Pullar, Michael Kennedy, November 1996, Queensland Schools A heritage conservation study. A report for the Department of Education.

³ Survey of thirty nine farms of various areas in the Parish of Bulimba (Museum Mapping and Surveying S151824 sht 2) and Cadastral Map 20 chain Morton Series 1887 sheet 1 showing original owners.

⁴ Burmester op. cit. Bulimba National School was built with outside studding.

£556-3-8 was recorded, which would have included the initial cost of construction plus extra for repairs and extensions.



↑N

Figure 1: '[Survey] of 5 acres of land in the Parish of Bulimba and in the NW corner of Portion No. 67 proposed to be granted for a National School' signed by James Warner and dated 18 May 1860 (Mapping and Surveying Museum N25.1). The notes in red were added later and show a subdivision for the School of Arts and the Gazettal of Reserve 231 for Bulimba State School in 1886.

The first available drawings of the school buildings at Bulimba are recorded in the Register of Schools prepared between 1860 and 1878. The Bulimba entry is not dated but may have been taken from a Special Report about the school and a site plan prepared in 1876⁵:

'The buildings stand on the top of a hill and from them the ground falls on all sides. Towards the W a small paddock of pretty level bottom land, rather wet, has been cut off from the rest by a 2-rail fence: except this part the soil is worthless.... A good deal of the big timber has been felled disclosing a magnificent view toward the SW but the place is thick covered with small timber and brushwood except the crown of the ridge where the buildings are. A [illeg] tank affords plenty of good water. – The garden which is enclosed with a fence of open sawn wood palings has been neglected and an air of untidyness pervades the premises..... The school measures 35ft x 17. Studding hardwood placed outside. Walls and floor beech. Roof pine. Shingles hardwood. No verandahs. In good preservation considering its age and unprotected state.....The residence contains 6 rooms and has a 5 ½ ft verandah on the SW and NW. It is built similarly to the school. The three front rooms and the NE room are ceiled and lined.... The middle back room forms the kitchen and contains the only fireplace in the house...A fowl house is shown in plan; also a stockyard in the NE corner of grounds... Some cultivation has been done at a former period behind the house as there are pine apples growing amid the grass and brushwood

⁵ QSA 13998 Special report on the Grounds and Buildings of the Bulimba School 3 July 1876

behind the girls' closet. In the way of gymnastic apparatus there appears SE of the school an ordinary swing and a circular swing neither fully equipped.'

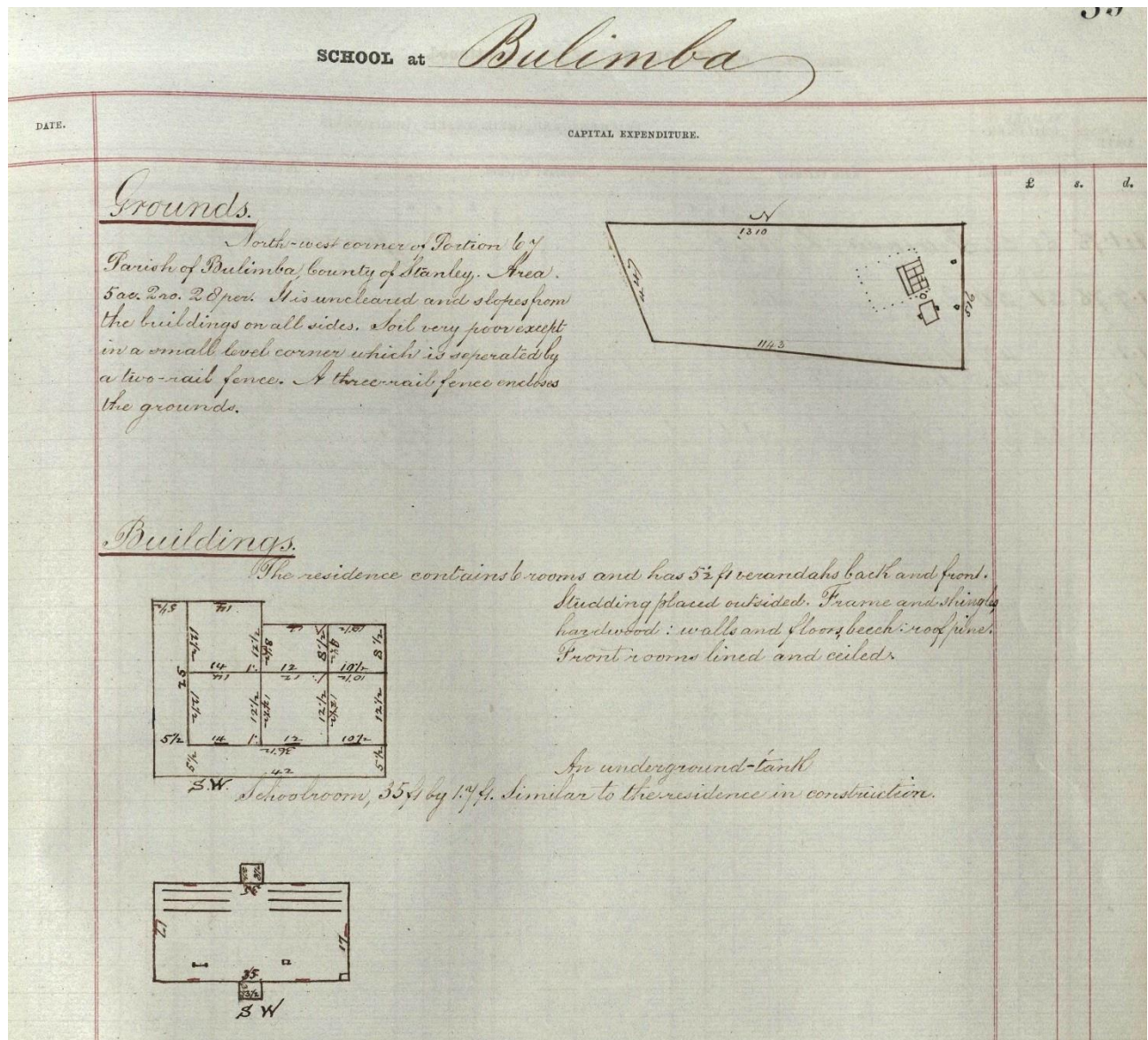


Figure 2 (above): Entry for Bulimba State School in the Register of Schools (Vol 2 p.39 QSA 13621) showing a sketch of the site 'north west part of Portion 67 5 acres 2 roods 28 perches' and the building layouts of the residence and school room. The alignment of the buildings reflected the topography, but they would also have faced towards the town centre of Brisbane. The school room layout was typical of the period with tiered seating.

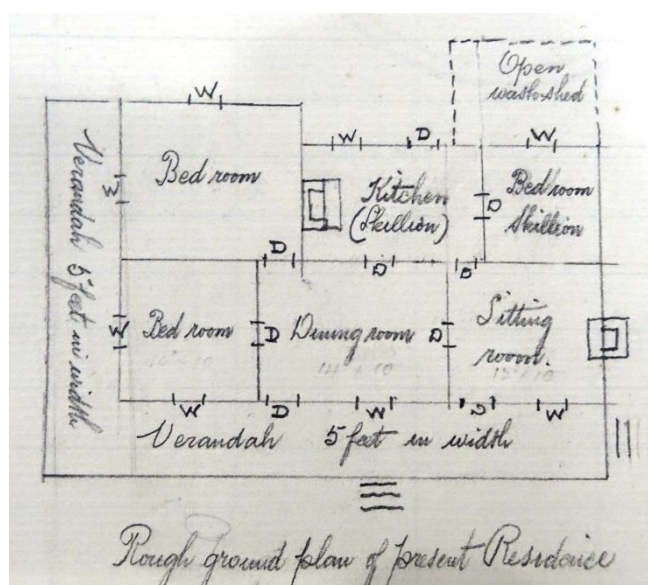


Figure 3 (left): Sketch of the residence in a report dated 20 February 1890, not long before the house was demolished (QSA 13998)

Access to the school was from a 'foot entrance' about midway up the Oxford Street boundary and double gates closer to the top of the hill. Roads on the south and eastern boundaries were not constructed until the early twentieth century.



↑N

Figure 4: Excerpt from 8 chain map of Brisbane and Suburbs 1907 (Mapping and Surveying website). The steep land around the school remains undeveloped. Note the Bulimba trigonometric station from the trigonometrical survey of Brisbane standard circuit traverse 1895.

During subsequent years the following alterations were carried out:

- 1874 rebuilding underground water tank and inserting antcaps on building stumps;
- 1874 additions to the residence;
- 1877 addition of verandahs to the school and another fireplace to the residence;
- 1884 addition to the school and replacing shingle roof with iron;
- 1886 construction of a playshed;
- 1886 Reserve for School of Arts excised from the north west corner of the site;
- 1888 additions (probably a new wing to south end of the school);
- 1892 residence apparently moved on site to make a level play area;
- 1897 residence replaced with a new house;
- 1903-4 addition of new wing to the north end of the school perpendicular to the original building. Plans initially prepared in 1899 – two storey unlined internally with vertical studs. Classroom 20ft x 40ft with teacher's annexe. Plans show original school 35ft x 17ft with

first addition at the south end [called the gallery room in 1901 report]. Second addition is 20ft wide x 50 ft with a teacher's room also to the south.

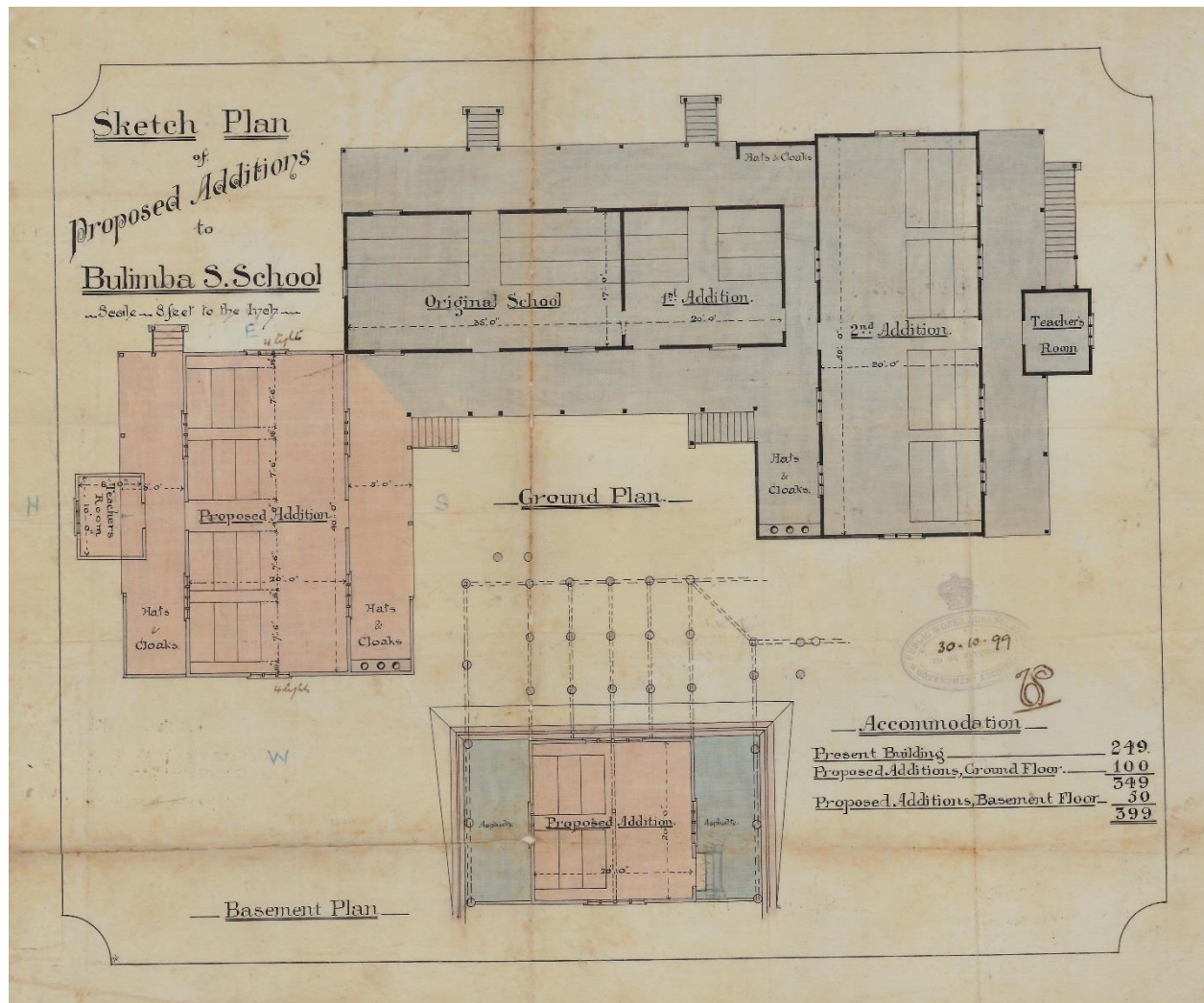


Figure 5: Proposed extension at the northern end of the original school, Department of Works drawing dated 1899. The first addition probably dates to 1884 and the second (at the southern end) to 1888 (QSA 13998)

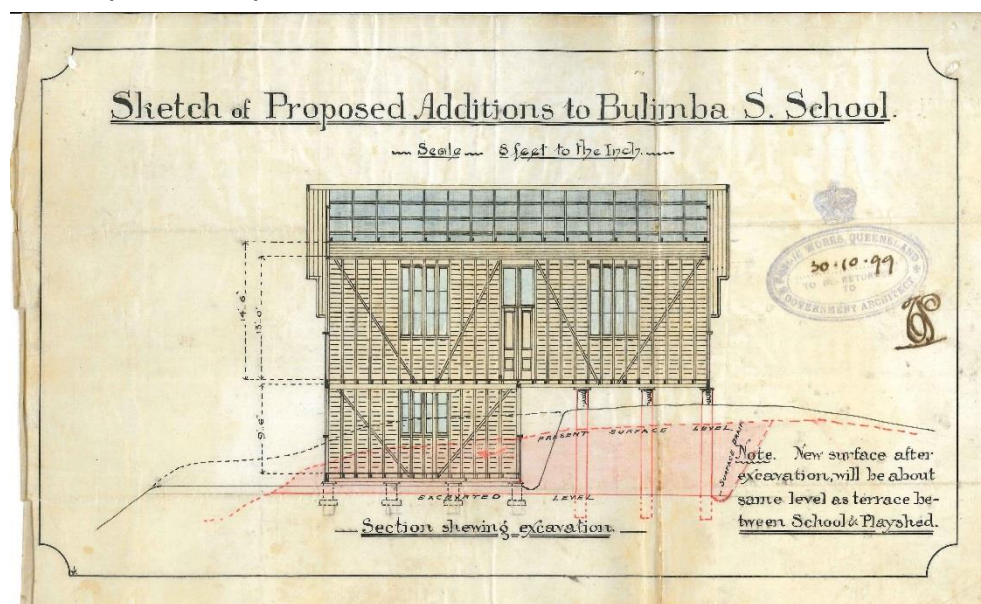


Figure 6: Section of new wing showing internal walls unlined and tall windows (QSA 13998).

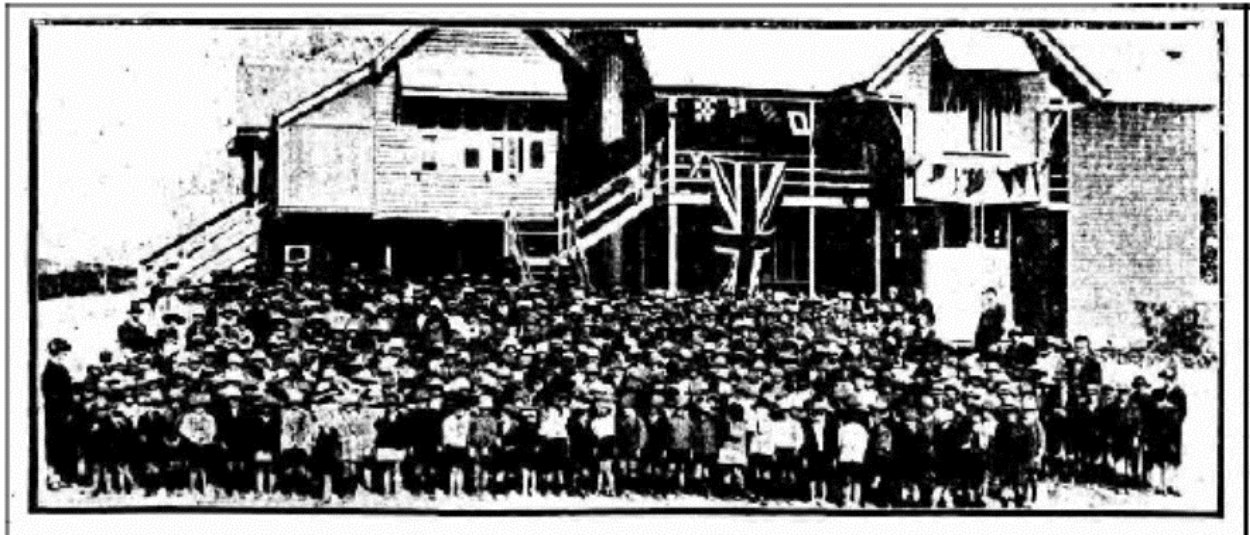
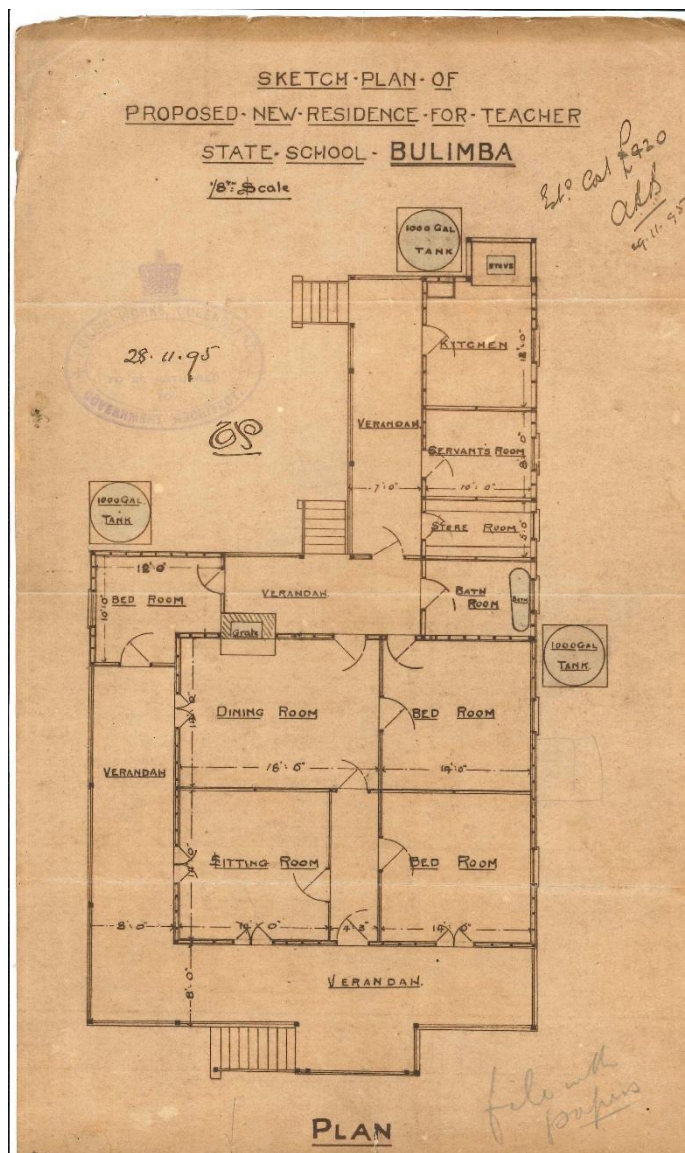


Figure 7: Photograph Bulimba School from the Brisbane Courier 17 July 1926. The block at left would be the original school building raised and modified. The block at right was built in 1904.



A new residence was constructed in 1897 based on a standard Departmental plan with four rooms and a kitchen wing. It faced north towards Oxford Street.

The extension to the school designed in 1899 was not built until 1904. On completion the school complex would have been fairly typical of many late nineteenth century timber schools in Queensland with a series of timber blocks placed at right angles to each other and linked by verandahs on both sides of each block. Classrooms were 20ft wide or narrower. Pupils' desks were placed to face across the building rather than towards the end walls. These designs were devised by the Department of Public Instruction from 1879 and would be developed in new directions after the Department of Public Works took responsibility for design of schools in 1894.

Figure 8: The second residence, Department of Works drawing dated 1895 (QSA 13998).

1.2.1 New Infants' School (Block C)

Following the extensions to the timber school, the 1867 portion of Bulimba School was used for infants until a new Infants' School was constructed in 1914 – 1915. The new building faced north to Oxford Street, and stood some distance downhill from the main school complex.

It was a high set weather board structure containing three classrooms with a verandah and teacher's annexe at the front. The roof was clad in diagonal asbestos tiles with a central fleche. The undercroft was asphalted for covered play.

The building was opened by the State Treasurer on 17 April 1915. Alterations to the main school were carried out concurrently providing a total capacity of around 500 pupils.

Mr Story, Under Secretary for Public Instruction spoke at the opening ceremony saying...*'he had noticed a certain amount of what might be termed "liveliness" in the district of Bulimba and the Education Department had to respond by expenditure on schools in a number of centres in the District...He could assure that Hon. Gentleman [the Treasurer] that the bill for buildings was going to be a large one for several reasons... a stage had been reached when the type of school building which had been built in earlier days had to be discarded in favour of buildings that were better lighted, ventilated and equipped, as a result of the experience which had been gained...'*



Figure 9: Bulimba Infants' school in 1915 viewed from Oxford Street (illustrated in Department of Public Works Annual Report 1915 plate 6). The projecting gable is the teacher's annexe and the ends of the front verandah are enclosed for hat rooms.

The Bulimba Infants' School was one of these new building types. No original plans have been found but plans for the 1952 'Reconstruction' combined with evidence from the photograph in figure 9, suggest that the new building was characteristic of timber classroom blocks designed by the Department of Works after 1909, except it had a verandah on one side only.

The Bulimba example had a fleche on the roof linked to ceiling vents and a continuous operable ventilation flap at the base of the verandah wall. Large windows in the gables and in the south wall of the middle classroom provided light to student's left hand side in the classrooms. The windows were characteristically in banks of tall, narrow sashes. The verandah walls would have incorporated pairs of doors with tall fanlights above leaving blank wall in between for hyloplates.

Although classrooms were allocated to infants from the 1860s, teachers were not trained to teach infants until 1893. Few infants' schools were constructed during the 1890s depression, but in 1910 The Department of Education established a committee to advise on infants' schools and new infants' classrooms were built at some schools between 1910 and 1920. These appear to have been standard classroom designs of the period but were detached from the main schools.

Open air annexes were also built for Infants and are more common. Examples survive at Norman Park State School (1915), Toowong State School (1918) and New Farm State School (1918).

1.2.2 The grounds

The magnificent views from Bulimba school were frequently noted in official documents, but much of the school site remained undeveloped during the nineteenth century and the first half of the twentieth century because of the steep ground and poor soil. There were frequent reports of clearing weeds and lantana and the need to keep out livestock. Goats and cattle remained a problem into the 1940s.

Arbor Days were established in Queensland in 1890 but available records for Bulimba State School do not identify individual trees which were planted. In 1909 new trees were being destroyed by livestock and tree guards were requested for new plantings.

Fig trees and Camphor Laurels were popular Arbor Day plantings as they were hardy and provided good shade⁶. References to shade trees on the north side of the Bulimba site probably refer to large fig trees on Oxford Street near the Infants' school. One of these trees was identified as a weeping fig when it was removed in 1968.

Native trees were also valued. In 1930 when a relief scheme to improve the grounds was underway, the head teacher complained that '*many fine young trees*' had been removed...'*I had taken pride in preserving the native trees in accordance with your instructions issued in connection with Arbor Day.*'⁷

Forestry plots were planted at Queensland Schools from 1928 and it is understood that a forestry plot was replaced by the present administration Block E⁸.

Reports of an awards ceremony at Bulimba School in 1911 record that six trees '*indigenous to various parts of the Empire, which had been donated by the Acclimatisation Society*'⁹, were planted in the school reserve. The trees were named after members of the Royal family.

⁶ *Brisbane Courier* 29 April 1891 p5 describes species typically planted at the time

⁷ QSA 125477 letter dated 24 July 1930

⁸ Information from the School Principal who remembers the plot prior to 2000.

⁹ *Brisbane Courier* 23 June 1911 p7



Figure 10: View of Bulimba from the south east (JOL 88030 excerpt). The timber school can be seen far right at the top of the hill. The School of Arts is visible at the junction of the three roads. This photo is dated to the 1920s in the archive and certainly dates to after 1914 when a second storey was added to the School of Arts.

1.2.3 Roadways

Access to the site was initially from Oxford Street on the north boundary. Wentworth Parade on the eastern boundary was not constructed until after 1907 and remained a dirt track. In 1933 the final levels of Oxford Street and Wentworth Parade were decided and the roads were lowered ‘several feet’ near the north eastern corner of the school.

1.3 The Interwar School (Block A)

In 1930 an additional area of land on the southern boundary was added to the school, as it was discovered that parts of the original school building stood outside the reserve¹⁰.

At the end of 1934 plans were prepared for replacing the timber school with a new brick school.

The initial drawings show a symmetrical brick building with two levels of classrooms (eight classrooms per floor) over an open play area. The plan was H shaped, which differed from more characteristic linear plans of the period. It incorporated a square tower rather than a fleche.

The drawing was initialled by MG and TRG, who were probably the designers. MG was Maurice James Guthrie and TRG would have been Thomas Robert Gladwin. Gladwin had been with the Department of Works since 1924 and contributed to the design of many of the interwar brick schools, but Guthrie was a New Zealand born architect who was with the Department of Works for only a year (1933–34) – which may explain the differences in design from the Departmental standard¹¹.

¹⁰ Reserve 231, the original site, was Sub 2 of Resub 2 of Sub 2 of Portion 4v and the wedge shaped land was R1337 Sub 2 of Portion 67.

¹¹ Watson, Donald and Judith McKay, 1984, *A Directory of Architects to 1940*, University of Queensland Library, pp. 92 and 95

Guthrie's initial design for Roma State School (1935) also differs from the more typical Works designs¹².

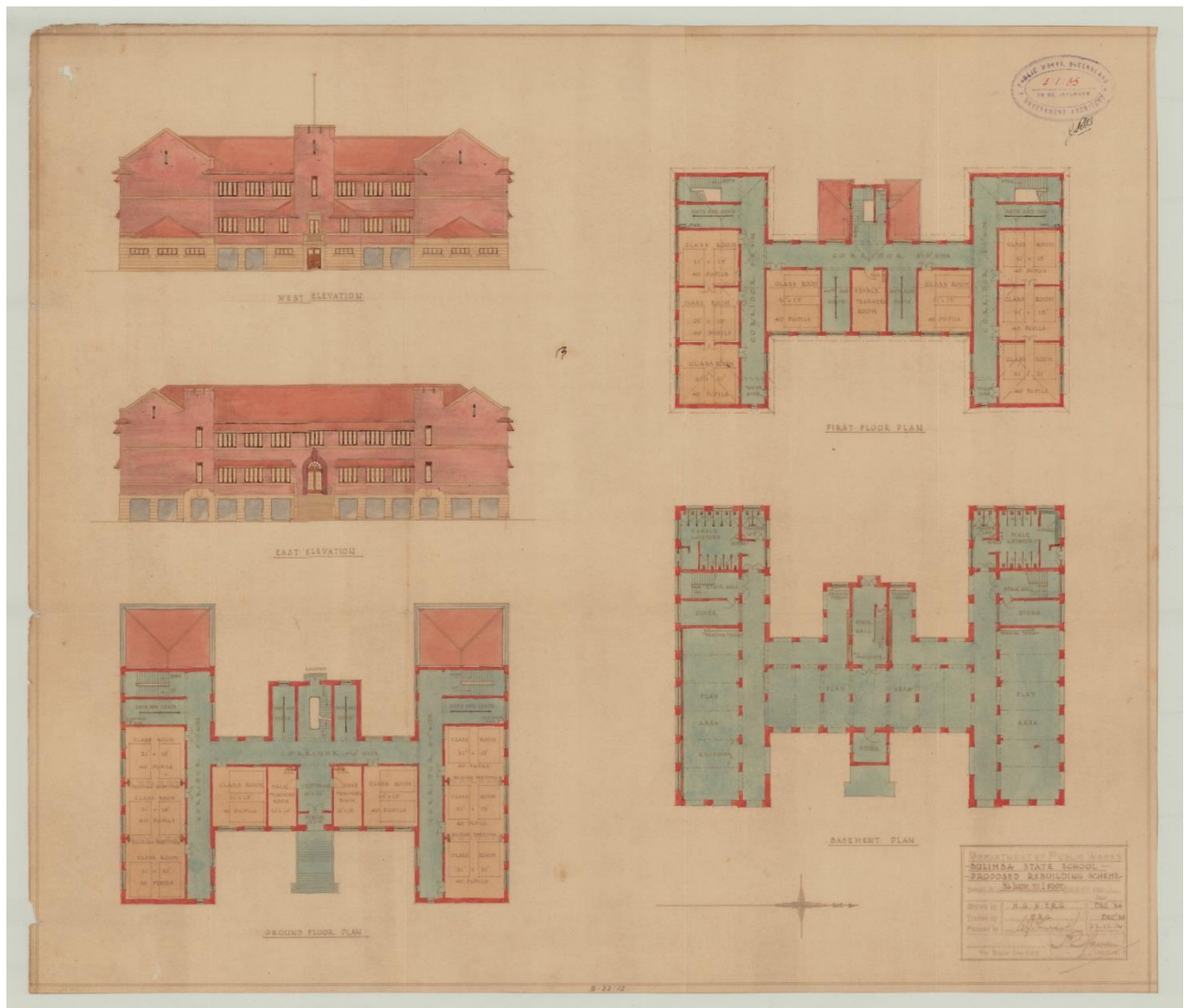


Figure 11: 'Proposed Rebuilding Scheme' Department of Works drawing December 1934 (QSA 125477 Box 24)

Eventually a revised design was adopted drawn by GR Beveridge in 1935. Beveridge joined the Department of Works in 1935 and remained with the Department for many years¹³.

The proposed new building was very similar to other brick schools constructed at the time and comprised two levels of classrooms over an open play area similar to the previous scheme, but was more linear in form. The walls were face brick with cement dressings and the hipped roof clad with Marseilles tiles featured a central fleche.

Six classrooms were located on the ground floor and seven on the upper level. The basement contained toilets at each end. The facilities at the northern end were single storey leaving room for the construction of two more classrooms above at a future date. There was a projecting porch

¹² Project Services 2010, Roma Government Complex Conservation Plan prepared for the Accommodation Office Department of Public Works.

¹³ Watson, Donald and Judith McKay, 1984, *A Directory of Architects to 1940*, University of Queensland Library, p.33

to the west (the front of the building) and suggestions for future extensions at each end also projecting west. Verandahs were positioned on the western side providing protection from the sun. Large banks of windows faced east providing left hand light to the students.

A block plan from 1935 shows the proposed siting of the new building at the top of the hill where the earlier timber school stood. The plan shows the original timber school at the south east corner (dotted), additional land acquired to the south, the School of Arts Reserve at the north west corner, the residence, playshed and Infants' School on the north boundary and the parade ground on the upper terrace with trees around the edge and steps leading down to the Infants' School. The shape of the parade ground reflects the orientation of the original buildings; the open area at the top of the steps from the Infants' School is the location of the first residence. The flat area at the west end of the site facing Riding Road was suggested for a basket ball court and tennis court.

Part of the original school building was moved to another position to serve as temporary classrooms during construction. The residence and Infants' School were also used.

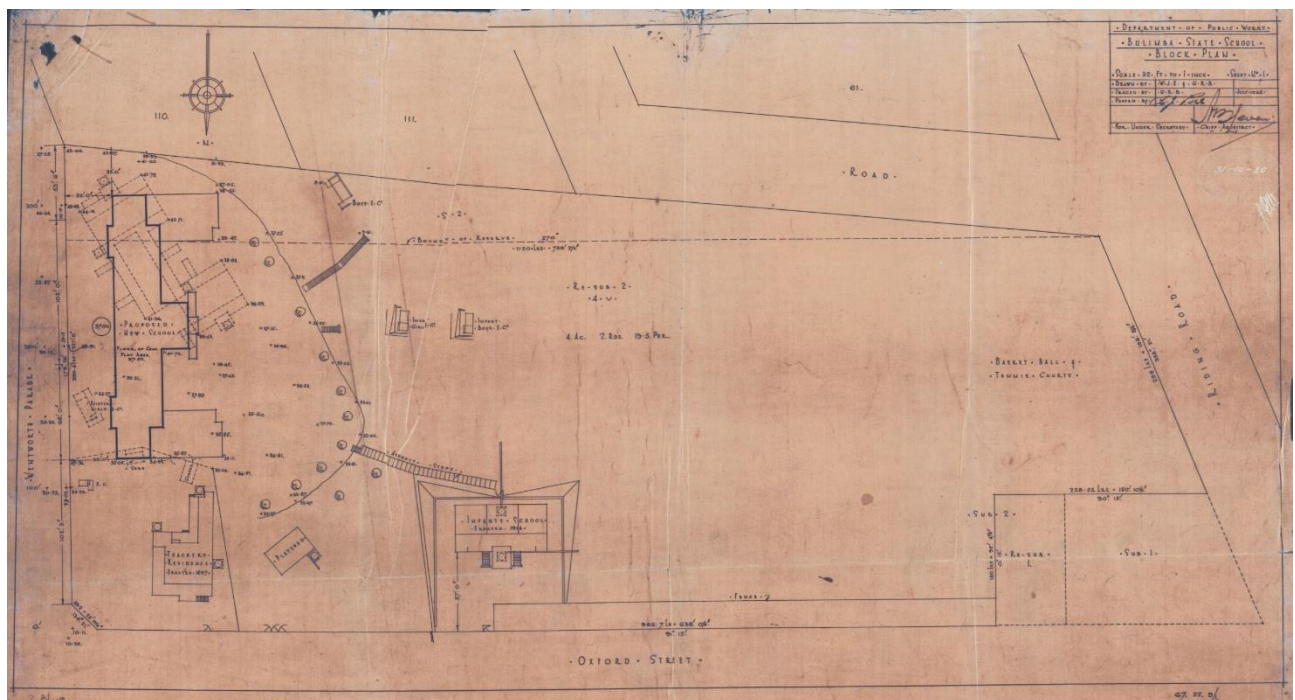


Figure 12: Block Plan July 1935 (QSA 125477 Box 24 blue print with colours reversed for legibility).

The school was opened in March 1938. A typescript held in Department of Works files described the project.¹⁴

'The new Building, situated on the crown of the Bulimba Hill, faces west and is bounded on the North by Oxford Street, and on the East by Wentworth Parade. The structure is of three (3) stories, built of brick and concrete with cement facings. The roof is covered with the "Marseilles" pattern roofing tiles, and is surrounded [sic] at the centre with a fleche. The new structure replaced the old wooden buildings. The building contains thirteen (13) classrooms situated on the ground and first floors, accommodating five hundred and twelve (512) pupils. A Head Teachers room, two (2) Teachers' rooms and four (4) hat and

¹⁴ QSA 13997 typescript dated 7 March 1938

cloak rooms are also provided. The classrooms on ground and first floors are provided with folding partitions. Lavatories for male and female teachers, boys, girls and infants, also store rooms are situated in the basement, the remainder of this floor being utilised as a play area. A complete drainage and septic tank installation is included. The grounds have been levelled and graded as required with retaining walls to Wentworth Parade and Oxford Street. Tennis courts have been built on the site previously occupied by the Head Teacher's Residence. The cost of the new Building and retaining walls to date is £25,463.'



Figure 13: Block A western elevation published in the Department of Works Annual Report for 1938. The north extension has not yet been built.

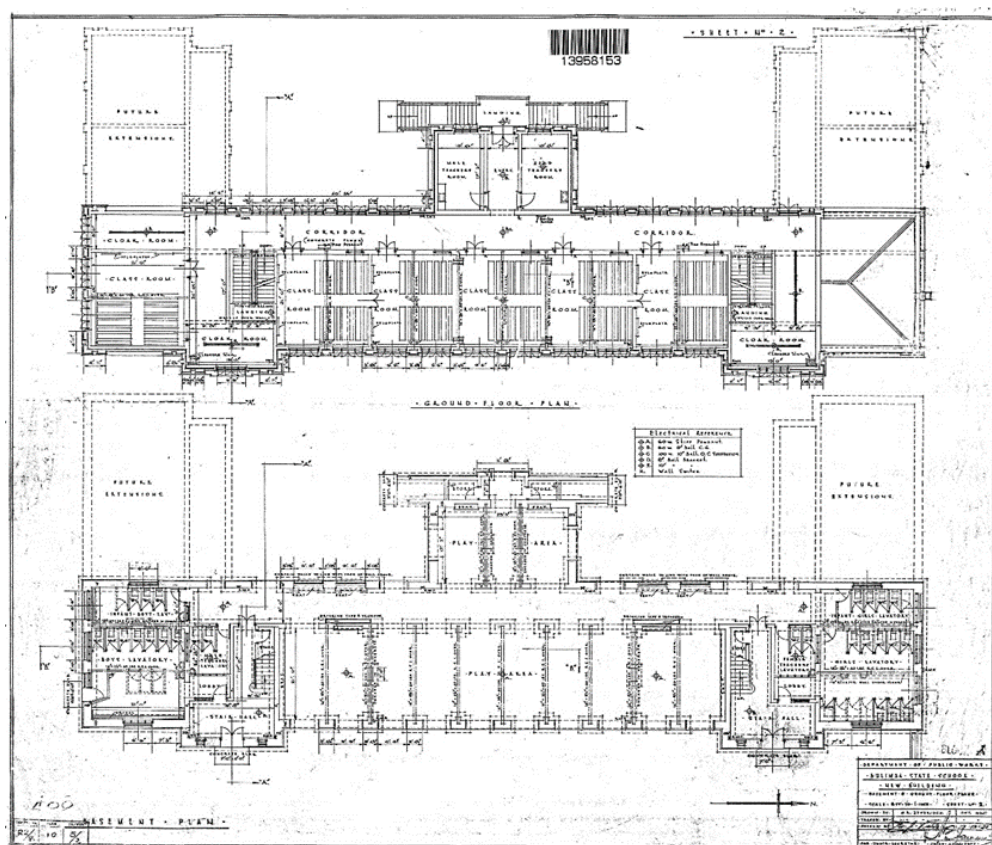


Figure 14: New Building, basement and ground floor levels, Department of Works Oct 1935 (eplan 13958153).

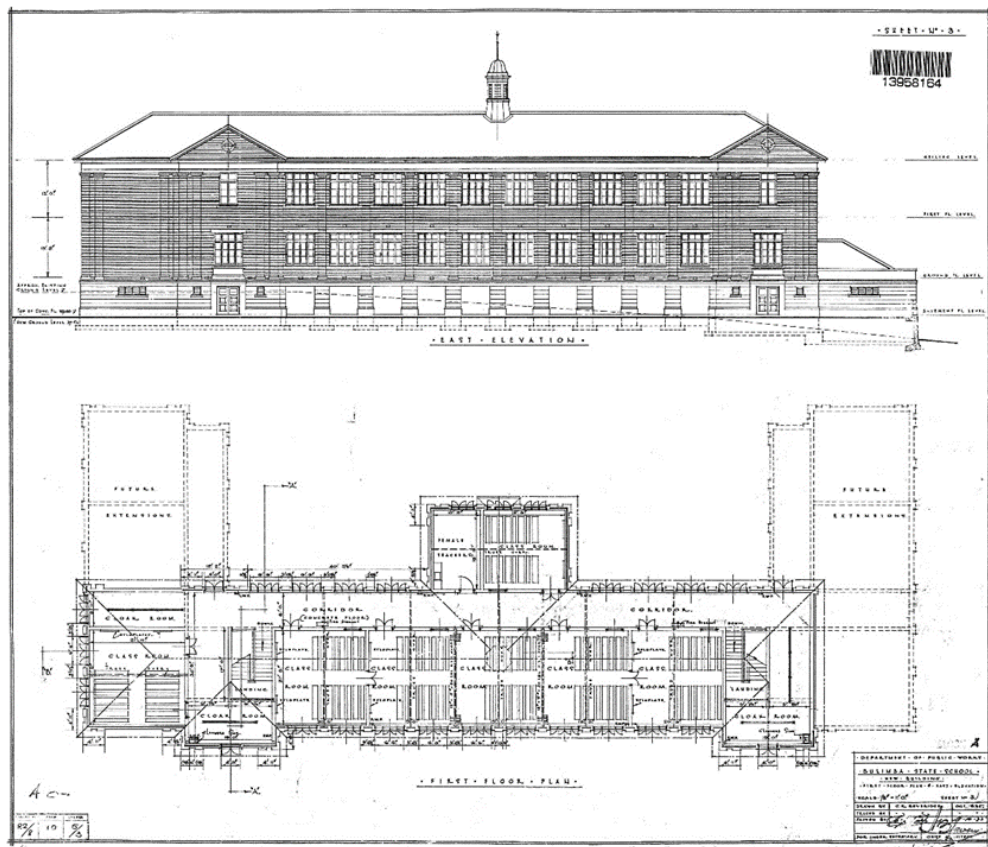


Figure 15: Bulimba State School, New Building, East Elevation and First Floor Level
Department of Works October 1935 (eplan 13958164).

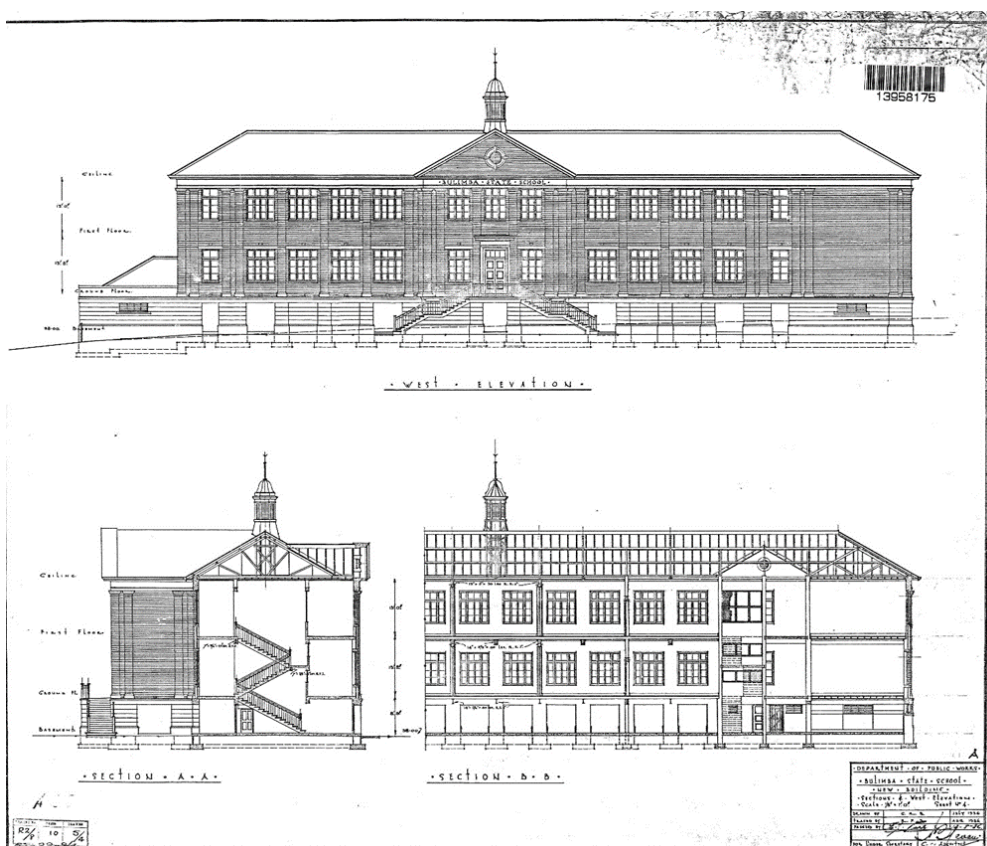


Figure 16: Bulimba State School, New Building, Section and West elevation
Department of Works July 1936 (eplan 13958175).

A specification was prepared in August 1936 (see summary in Appendix 5.3). The construction was of high quality and included solid and cavity brick walls, reinforced concrete lintels, sills and copings, floors either of suspended concrete finished with a non-slip carborandum finish or timber

floors of crows ash, sound proofing of engine ash between the ground and first floor classrooms, joinery of silky oak and pine and roofing of terracotta tiles. The fleche was clad in galvanised iron with a terracotta shingle tile base and roof gutters were 8 inch ogee galvanised iron discharging to cast iron downpipes through copper bends. Ceilings were fibre cement with cover battens.

The teacher's residence and timber school buildings were sold for removal early in 1938.

The exterior of the school bore striking similarities to Townsville West State School constructed 1937 – 1938¹⁵. RP Buchanan was probably the designer of this school within Department of Public Works. This school had projecting wings at each end, like the extensions proposed for Bulimba.



Figure 17:
Exterior of
Townsville
West State
School in
2011.

Like many of the large brick schools built between the wars, the new school building at Bulimba was a prominent landmark on the skyline.



Figure 18:
View from
the north
west before
1958 with
Block A on
the skyline
(extract JOL
negative
168416)

¹⁵ Project Services, 2011, Townsville and District Education Centre Conservation Management Plan.

1.4 Development 1940s – present

1.4.1 Block A extensions

As a temporary measure the basement of Block A was partially enclosed in 1941 to provide more seating. Additional classrooms were not constructed until after the War.

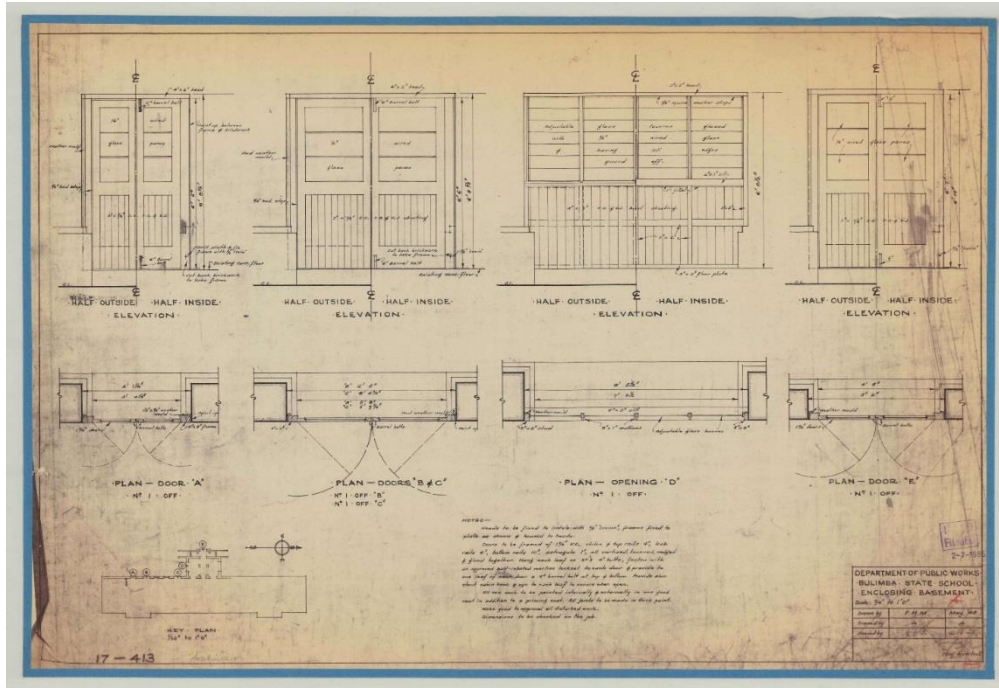


Figure 19:
Proposed
enclosure of
south west part of
the basement of
Block A May 1948
(QSA 585673)

In 1955 construction of two classrooms was approved at the north end of Block A above the single storey toilet facilities. The brick was closely matched to the original, as was the tiled roof, but the windows installed were banks of hoppers in accordance with post war standards. The extension was constructed in 1957

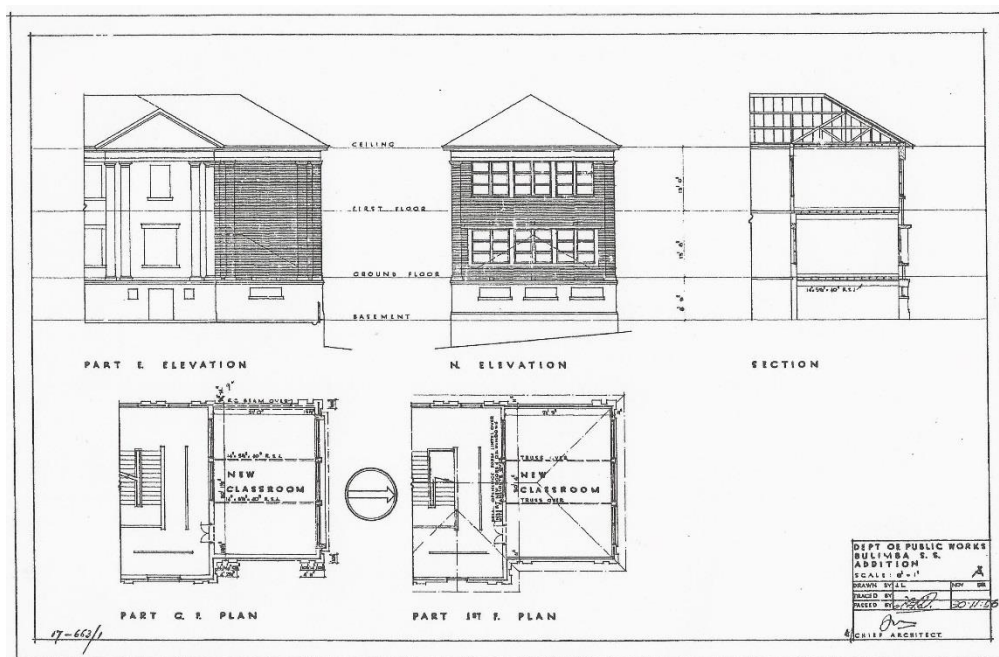


Figure 20:
Addition,
Department of
Works 30 Nov
1956 [EHP]

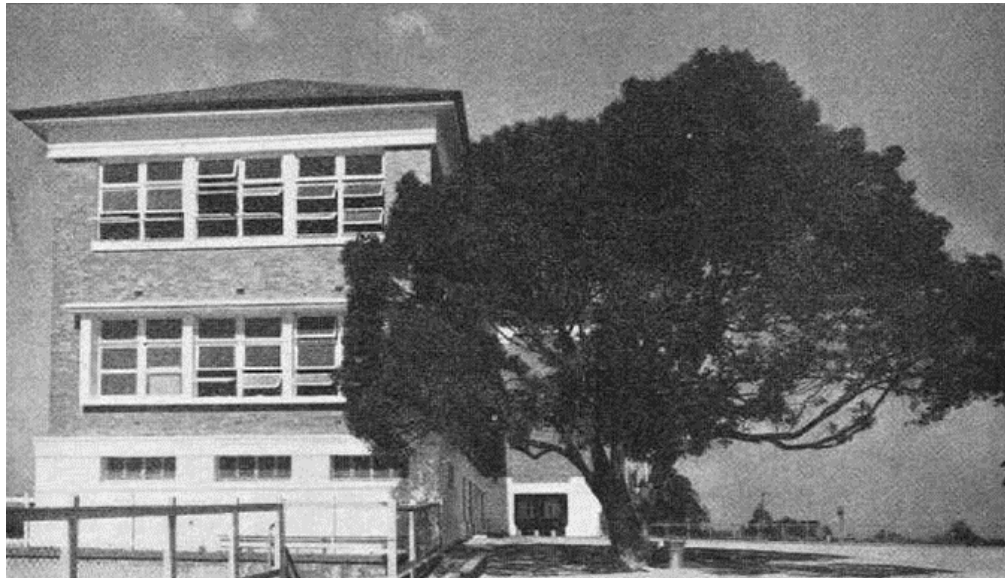


Figure 21: The northern classroom extension (Department of Works Annual Report 1958).

The image above shows a camphor laurel tree (which survives) and the original timber and chainwire fence which would have extended around the upper terrace.

1.4.2 Repair of Block C

Following construction of Block A, the Infants' School was surplus to requirements and was used by the Balmoral Kindergarten and Nursery School until 1941. The Kindergarten constructed their own building in 1944 -1945 on about one third acre of land excised from the School Reserve. The Infants' school was still unused in 1948 due to lack of staff.

By 1952 the Infants' School was in poor condition with a leaking roof and racking of the roof framing possibly due to subsidence of the stumps. Plans were prepared for the replacement of the asbestos cement tiles in Super Six, for alterations to the roof framing and folding partitions between classrooms and for the installation of additional hopper windows in the south wall, in accordance with post war classroom standards. This work was carried out in 1954 at which time the fleche was removed.

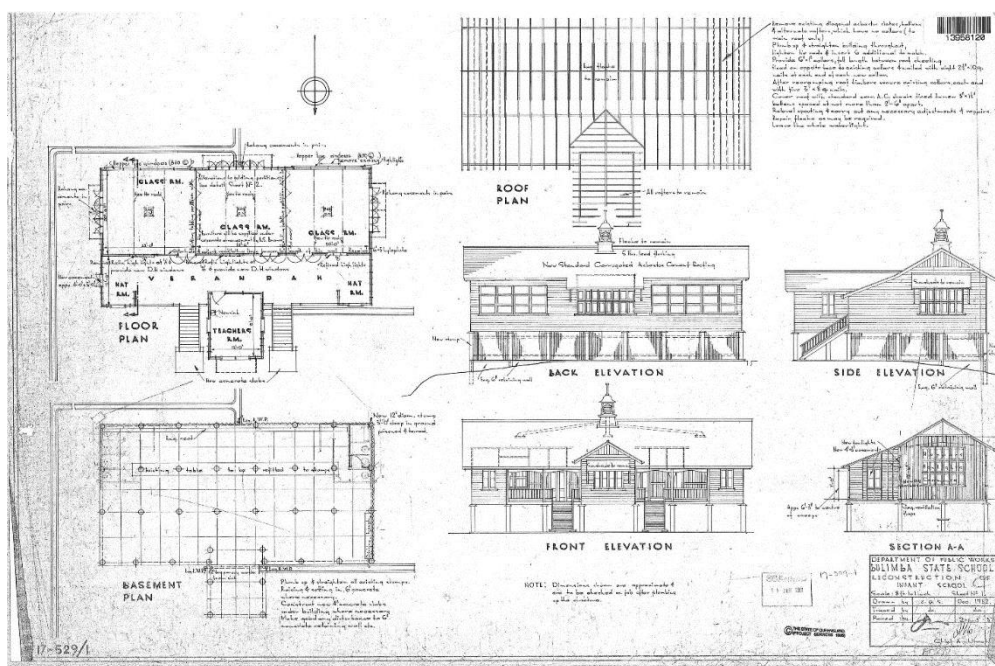


Figure 22: Reconstruction of Block C 1952 (eplan 13958120). The new hopper windows are visible in the rear elevation.

The verandah was sequentially enclosed after 1958.

Block C was again remodelled in 1983 at which time most of the classroom wall to the verandah was removed, the folding partitions were removed and the 1915 window sashes were replaced.

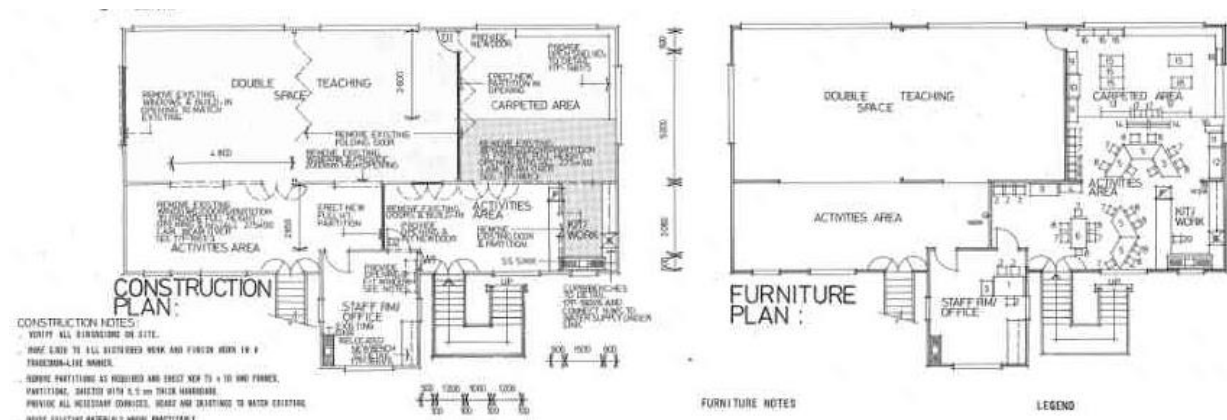
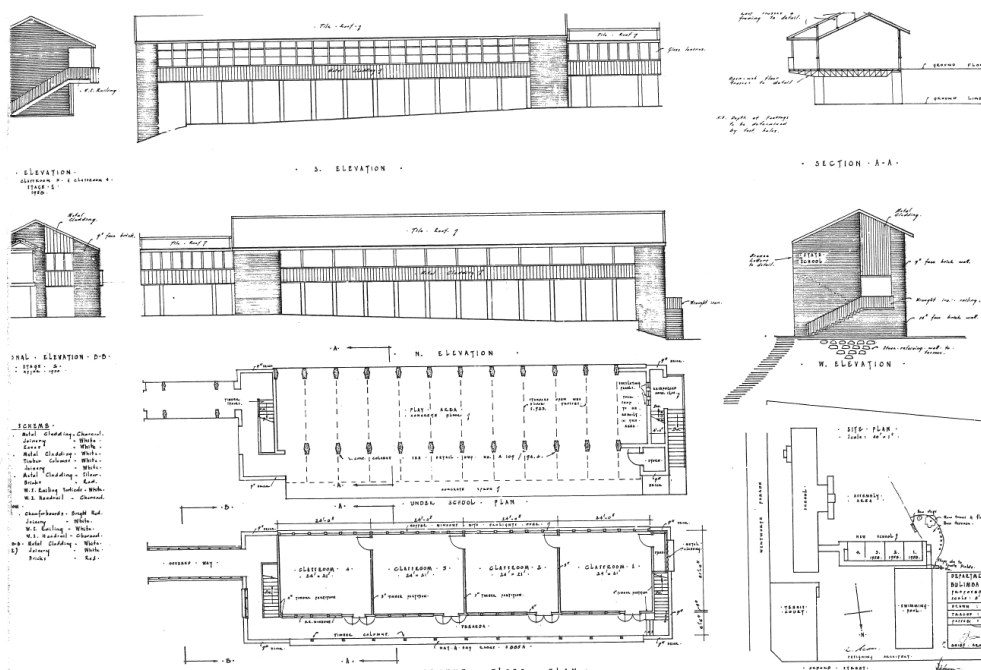


Figure 23: Alterations proposed to Block C in 1981 (eplan 11802307)

1.4.3 Construction of Block B

Construction of Block B for £9,053 was approved in 1958. The School Principal was concerned about loss of play space on the western side of Block A but the Department of Works argued that the new building was located along the existing division between boys' and girls' play areas and would provide a covered play area underneath.

Plans prepared for the building showed four classrooms perpendicular to Block A with only three classrooms to be built. The building construction was a standard post war design with the upper floor of classrooms supported on open web steel trusses to provide unobstructed playing space below. Concrete pillars were a typical lozenge shape. There was a verandah on the north side of the classrooms and banks of hopper windows on the south side. The end walls were of face brick and the roof was tiled. Balustrades were solid incorporating bag racks and were sheeted in metal cladding.



**Figure 24:
Proposed Block B
26 Nov 1958 [EHP]**

The plans include a specification for the building colours which were to be:

- Bricks - red
- Metal cladding – charcoal on the south and silver on the west
- Joinery and eaves – white
- Wrought iron railing - white with a charcoal handrail
- Chamferboards (at the east end before construction of the fourth classroom) – bright red – although the photo suggests they were painted a pale colour.



Figure 25: Block B in August 1960 (QSA image 15406). The fence at right is the swimming pool.

1.4.4 Development of the grounds after 1938

Problems managing erosion of the steeply sloping site were a recurrent theme of correspondence following completion of the brick school. The school committee took a particular interest in the grounds and was responsible for many aspects of their maintenance and development, including raising funding for improvements.

A series of improvements were carried out to stabilise the land by terracing and to provide improved sporting facilities. The first priority was to stabilise the bank around the western edge of the Parade Ground on the upper terrace and to provide a secure fence; work which was approved in 1940. A timber fence with its chainwire panels was constructed and is visible through the concrete pillars of Block B in the image above as well as one of the trees planted around the edge of the Parade ground.

In 1939 the purchase of additional land was suggested, but this did not proceed because of the expense and the steepness of the land suggested.

In the 1940s the School Committee developed ideas for the grounds which were submitted to the Department of Works in 1948. The suggestions included more tennis courts, improved basketball

courts and a swimming pool. In 1948 the Department of Works produced several versions of the proposals.

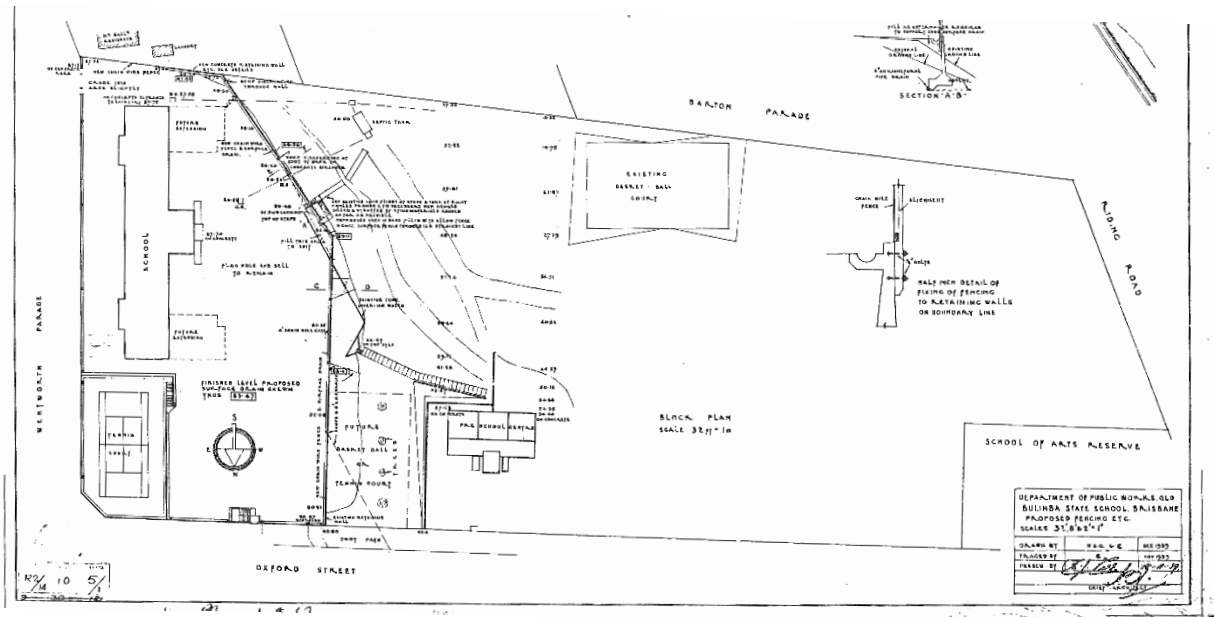


Figure 26: Part of a site plan prepared for the new retaining wall and fence around the western edge of the parade ground in 1939. A roughly excavated basket ball court is shown on the south boundary in the position of the existing courts and a new tennis court or basket ball court is proposed on the site of the swimming pool [EHP].

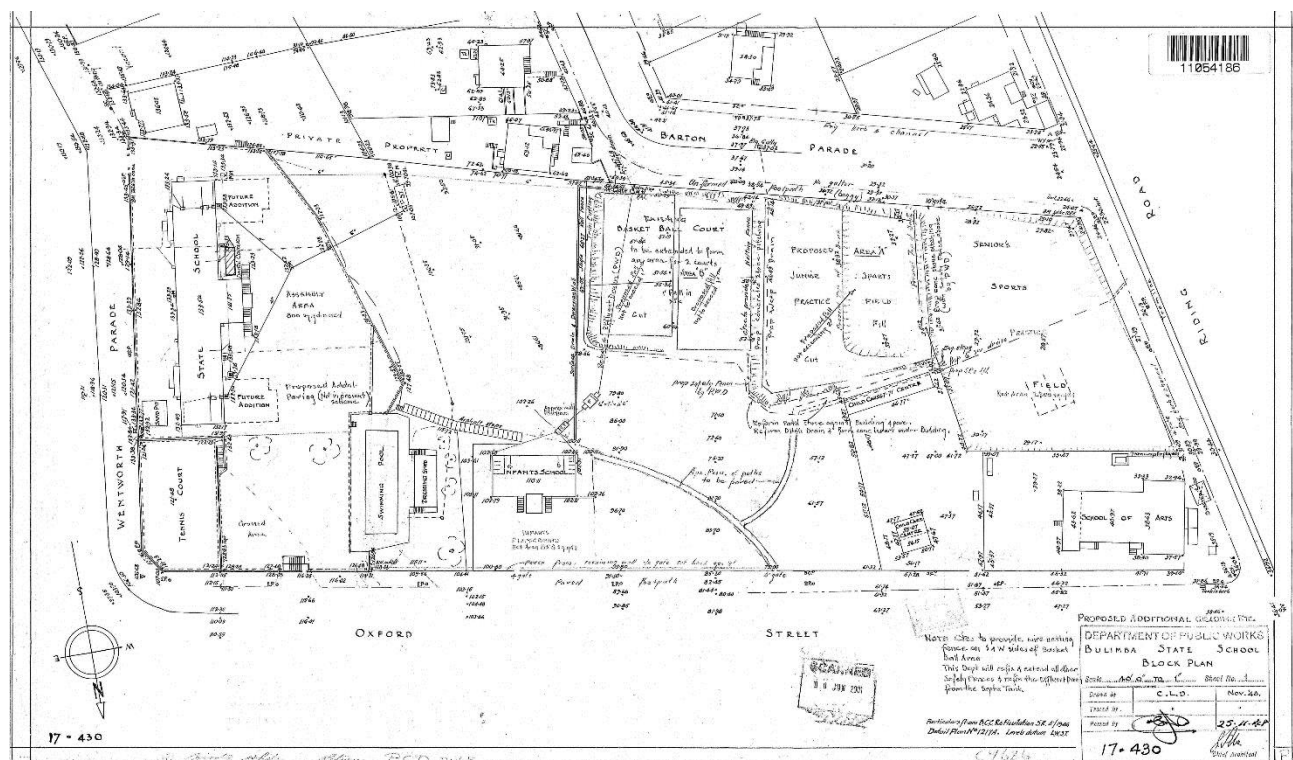


Figure 27: Site plan dated 1948 (eplan 11054186).

The plan in figure 27 is the most complete of several versions of the same drawing and includes the swimming pool in its current position. The plan also shows:

- Block A and the tennis court on the north east corner (built 1938)
- Entrance steps from Oxford Street to the upper terrace (built 1938)
- Swimming pool (eventually constructed 1954-55) with dressing sheds originally constructed out of timber. Extensive repairs to the swimming pool were carried out in the 1960s.
- Steps down to the Infants' School from the upper terrace (predates Block A).
- Path to Oxford Street around the back of the Infants' School (this appears to have been an early entrance possibly in the approximate location of the 1867 foot access).
- Branch in path from Oxford Street leading to the sports fields (concreted 1961?).
- Child Care Centre (built 1945 and also called a Kindergarten) on land excised from the school site next to the School of Arts
- School of Arts (1886).
- a water 'diversion wall' running from the back of the Infants' School to the south boundary (constructed 1952)
- Area of existing basketball court on Barton Parade extended to form two courts (estimates prepared 1958 for work carried out 1961 included resurfacing with decomposed granite and erection of concrete block retaining walls)
- New intermediate terraces forming the Junior Practicing fields (these were levelled and supported by concrete block retaining walls by the Department of Main Roads in 1961)
- Bottom terrace designated the Senior Practicing field (cleared paddock by 1876).
- Concrete steps from upper level sports ground (Junior) constructed 1961.
- 1965 connection to sewerage.

The sequence of development after 1946 is shown in aerial photographs which follow.



↑N

Figure 28: Aerial photograph dated 1946 (BCC H26C) showing Blocks A and C, the Child Care building, School of Arts building and mature trees. Note tree on East side of Block A.



Figure 29: Photograph held by Bulimba School dated 1955. This photograph may be earlier than 1955 as it predates the installation of the hopper windows in the Infants' school which occurred in 1954. The fence of a tennis court built ca 1940 above the site of the existing swimming pool is visible.

Photographs up to 1960 show the area around A Block as open except for a few shade trees. Mature trees also grew in front of the Infants' School. The bottom oval is clearly defined but the basketball court on the south boundary is roughly formed. Much of the sloping ground on the southern side of the school is eroded with a maze of pathways crossing it.



Figure 30: Aerial photograph date 1960 (BCC 227) showing Blocks A, B, C, the Child Care building, the School of Arts and cleared ground around the basketball courts and intermediate playing fields.

In the aerial photograph above the pale colour is probably decomposed granite; the darker area on the parade ground to the west of Block A is probably bitumen.

Concrete retaining walls around the basket ball courts and middle oval were constructed in 1961 and are shown in the aerial photograph for 1964.



Figure 31: Aerial photograph 1964 (BCC 417) showing Blocks A, B, C, the pool, the Child Care building, School of Arts and masonry retaining walls around the intermediate playing fields. The trees in front of the Infants' School are probably figs, one was removed in 1968.

1.4.5 Recent changes

Since 1994 the site has been heavily developed to accommodate population growth in the Bulimba area and to upgrade facilities to meet current standards for schools.

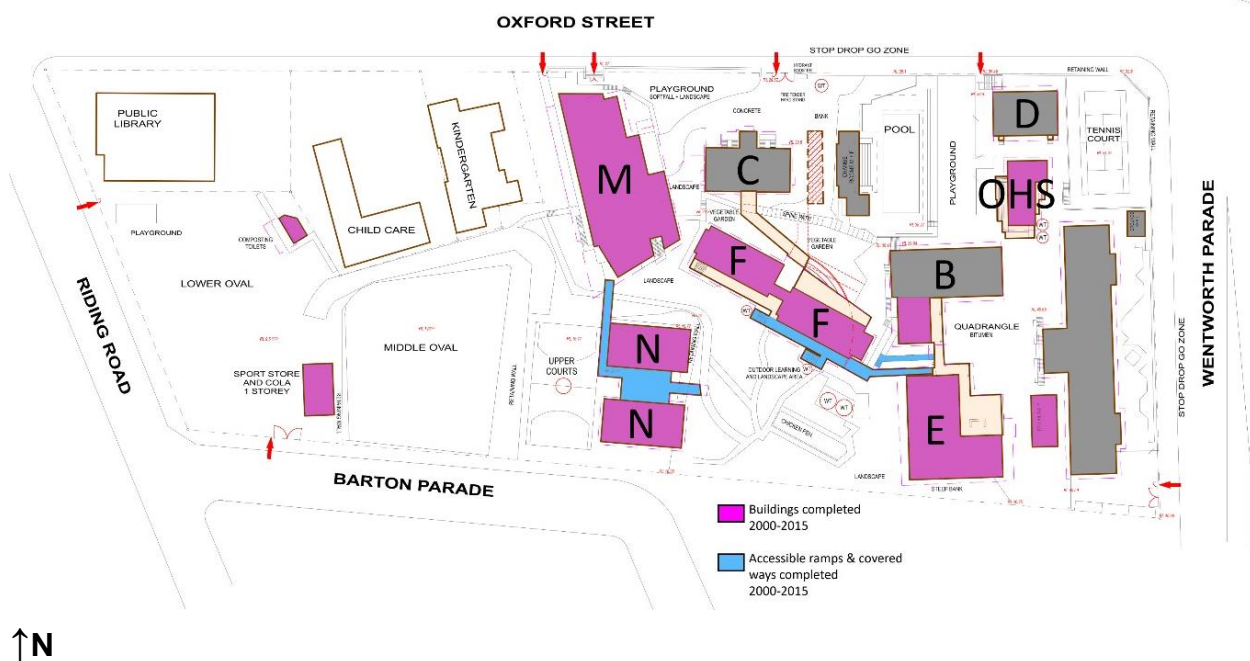


Figure 32: Diagram of buildings and accessible ramps completed 2000 – 2015 using base plan prepared by Biscoe Wilson Architects.

In the list below, GLAs refers to general learning areas or classrooms.

Since 1994 development has included:

- 1994 Addition of Demountable Block D
- 1996–97 Remodelling of Blocks A and B
- 1998–00 Construction of Block E and extension to Block B
- 2000 Building better schools modifications to Blocks A and B
- 2001 Composting toilet in lower playing field constructed
- 2004 Upgrade of amenities, Block A basement
- 2006 Hire building installed behind Block A
- 2006-07 Block F constructed containing 10 GLAs
- 2009 New hall (M) also containing 3 GLAs and Stephanie Alexander Kitchen
- 2010 New Out of Hours School Care building constructed
- 2012 New demountables Block N
- 2013 Block B undercroft enclosed and tuckshop expanded and refurbished
- 2014 Metal framed shed on lower oval replaced with a larger metal framed shed.
- 2014 Roller shutters installed in east side of Block A undercroft for OHSC office

2 APPENDICES

2.1 Existing buildings

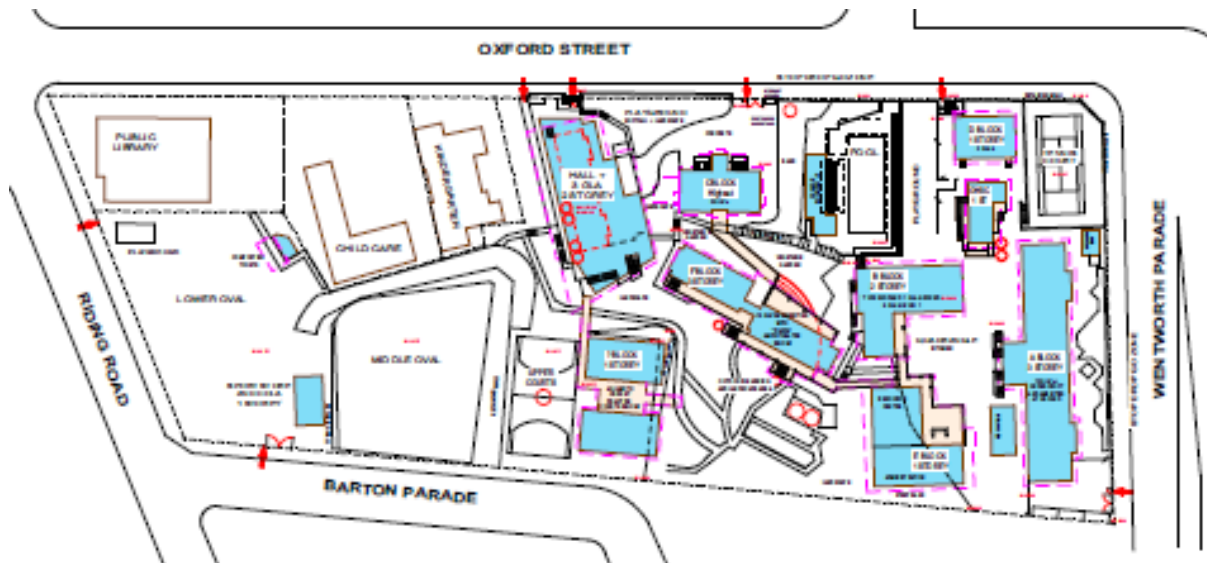


Figure 33: Site plan as existing prepared by Biscoe Wilson Architects 2015

<i>Component & Bld no.</i>	<i>Present use</i>	<i>Accommodation and associated structures</i>	<i>Date of construction or planting</i>
Upper terrace			
Block A 01	General learning years 5 & 6, 1 class year 3, 1 special ed.	Undercroft – open area OHSC Office and amenities 2 levels above each with 6 GLAs 33 classes all together	1938, North extension 1957 - 58
Trees in front of A		One tree appears to be commemorative	One tree possibly soon after 1938
Hired shed	General learning	One storey	2006
Block B 10	General learning	Undercroft partly enclosed for tuckshop, OHSC students and 1 computer classroom 1 level above with 3 GLAs	1958 - 59 Extended 2000 Undercrof enclosed 2013
Block D 05 Demountable	General learning year 3 proposed music room	1 level – 2 GLAs	1994. Sited on 1938 entrance forecourt from Oxford Street.
Block E 02	Admin library Staff room (80 staff)	1 level – Admin and Resource centre Covered area (13) Covered links (14)	2000
Pavilion (25)	Out of hours school care	1 level Water storage tanks	2010. Sited on 1938 entrance forecourt from Oxford Street.
Retaining walls	Retaining walls on north and east boundary	Chainwire fences, concrete walls, spoon drains and steps.	1938 Fences replaced 1960
Retaining wall	Western edge of parade ground	Concrete with timber fence – now only visible as a bank	1940

<i>Component & Bld no.</i>	<i>Present use</i>	<i>Accommodation and associated structures</i>	<i>Date of construction or planting</i>
Tennis court NE corner (17)	Sports	Retaining wall and steps original. Fence replaced. Groundsmans shed (07) recent –on site of 1948 sandpit.	1938
Upper play area	Play	Shade structure (11) Camphor laurel (see below) Rock memorial (recent)	The original entrance forecourt to the school from Oxford Street.
Camphor Laurel trees		Located in upper play area and at corner of the courts.	By 1958, probably after 1938.
Middle terrace			
Block C 09	Formerly prep now unused	Undercroft – not habitable space – amenities 1 level above – 2 GLAs	1914-1915, 1954 remodelled 1983 remodelled
Block F 04	Prep and General learning years 1 and 2	6 split levels – 10 GLAs and amphitheatre at ground level	2007 Large building set down slope
Block M 23	Hall and General learning	Ground level – 3 GLAs (now year 1) and undercroft Upper level multipurpose hall and Stephanie Alexander kitchen	Large building visible from street 2009
Block N	General learning year 4	High set on steel framing constructed on lower terrace – 4 GLAs	2012
Spine path	Access from A to C	Concrete path	Before 1937 concreted 1940? Also in 1960s.
High level walkways	Access from E to F	Concrete path and roofs	?
Swimming pool 15	Sporting – well used	Covered area (12) Pool pump room 18 Grandstands (19, 20) Canteen 21 Amenities 22 Water storage tanks	1954 -1955, none of the associated structures are original.
Prep playground	Play	Fig tree (condition?) other tree was lost during construction of hall.	Original play area associated with Block A now much reduced.
Outdoor learning area	Outdoor learning – well used	Various recent terracing and paths	Possibly two large gums may be early
Sporting facilities 26	Sporting – basket ball	Block N built over one court	
Bottom terrace			
Basket ball courts 26	Sporting	One court now used for substructure to Block N	Enlarged and retaining walls built 1961
Middle oval	Sporting		1867 modified 1961
Lower oval	Sporting	Amenities 03(compositing toilet) Shed for sports equipment 08	1867, buildings recent

2.2 Chronology

The following symbols have been used in the reference column of the table which follows:

AR	Department of Works (DPW) Annual Report
BC	Batch cards QSA 125477
BCC	BCC archive
BrC	Brisbane Courier
BW	Information provided by Biscoe Wilson
CM	Courier Mail
EHP	Research file 601874
Eplan	Department of Housing and Public Works electronic database, barcode no.
MS	Museum Mapping and Surveying, Lands Centre and web site https://data.qld.gov.au/dataset/historical-cadastral-map-seriesqueensland
Qlder	Queenslander
QSA	Queensland State Archives item no.
SM	Sunday Mail

Date	Event	Reference
The nineteenth century school		
1860	Education Act of 1860 creates Board of Education which controls National Schools and assists with building vested schools.	
18 May 1860	Survey plan for National School at Bulimba part of Portion 67	N25.1 survey plan MS
1862	First freehold title for Portion 67 which excluded the National School – G Harris [George Harris?]	MS S1518.24
20 April 1866	Public meeting held at Bulimba Hotel to consider best way to raise funds to erect a National School at Bulimba. A committee was set up and subscriptions invited.	BrC 21 April 1866 pp4-5
1866	Following the meeting it was agreed that an 18 x 14ft school building and a residence would be supported by Government.	Bulimba SS 125 th Anniversary booklet p11 in EHP files
16 July 1866	Bulimba National School established 16 July 1866. Michael Robertson's tender of £230 was accepted and the buildings were completed in October 1867. School classes held in Wesleyan church meanwhile.	EHP QSA 13997 Qlder 14 July 1866 p5
	List of National Schools Established up to the passing of Crown Lands Act of 1868 includes Bulimba 5 acres Deed no 3190	QSA 99366
27 August 1873	Letter from head teacher - Problems with lack of water - brick water storage tank 9 ft deep holds only 4ft of water and much of the roof does not have spouting to collect water. Requests a small zinc tank for the children	QSA 13997
10 Jan 1874	Tender for minor repairs including inserting iron caps on stumps and rebuilding brick water tank (underground) with domed roof.	QSA 13997

Date	Event	Reference
27 April 1874	Meeting of the school committee proposed the addition of two rooms to the 'schoolhouse' each 12 ft square and addition of verandahs front and back to the school 'and that a chair be supplied for the school master.' This was approved but the teacher had to provide the chair.	QSA 13997
1875	Building and repairs of vested and non vested schools includes Bulimba £556-3-8	AR 1875
10 Sept 1875	Education Act of 1875 abolishes Board of Education and creates Department of Public Instruction. Establishes primary schools for children aged 6 – 12 in State and Provisional Schools.	
1876	Sketch of site and buildings in the Register of Schools Volume 2. 'North West corner of Portion 67 Parish of Bulimba County of Stanley. Area 5 ac 2 ro 28 perch. It is uncleared and slopes from the buildings on all sides. Soil very poor except in a small level corner which separated by a two rail fence. A three rail fence encloses the grounds.' 'The residence contains 6 rooms and has 5 ½ ft verandahs back and front. Studding placed outside. Fame and shingles hardwood: walls and floors beech: roof pine. Front rooms lined and ceiled.....An underground tank.... School room 35ft by 17 ft. Similar to the residence in construction.'	QSA 13621 pp39 - 40
3 July 1876	Special Report on the Grounds and Buildings of the Bulimba State School. 'The buildings stand on the top of a hill and from them the ground falls on all sides. Towards the W a small paddock of pretty level bottom land, rather wet, has been cut off from the rest by a 2-rail fence: except this part the soil is worthless. – The whole grounds are enclosed by a 3 –rail fence, broken in places as shown in plan. A good deal of the big timber has been felled disclosing a magnificent view toward the SW but the place is thick covered with small timber and brushwood except the crown of the ridge where the buildings are. A [illeg] tank affords plenty of good water. – The garden which is enclosed with a fence of open sawn wood palings has been neglected and an air of untidyness pervades the premises. Teacher has been only a year in the place..... The school measures 35ft x 17. Studding hardwood place outside. Walls and floor beech. Roof pine. Shingles hardwood. No verandahs. In good preservation considering its age and unprotected state. Doors and windows shown in plan. A small landing 3 ½ ft 3 ½ ft at the top of the steps before each door.....The residence contains 6 rooms and has a 5 ½ ft verandah on the SW and NW. It is built similarly to the school. The three front rooms and the NE room are ceiled and lined.... The middle back room forms the kitchen and contains the only fireplace in the house... The closets are shown in plan. They have recently been repaired...A fowl house is shown in plan; also a stockyard in the NE corner of grounds... Some cultivation has been done at a former period behind the house as there are pine apples	QSA 13998

Date	Event	Reference
	growing amid the grass and brushwood behind the girls' closet. In the way of gymnastic apparatus there appears SE of the school an ordinary swing and a circular swing neither fully equipped.' Plan shows buildings fairly close facing south west with tank between. Oxford Street eastwards 'is not used. It goes over the hill and meets the Doughboy Road which winds round the hill to the north of this' [Lytton Road]. A double gate is shown in approx. location of existing steps from Oxford Street linked to a track down the hill to Doughboy road. The school of arts reserve had been marked on later in pencil.	
5 June 1877	Letter regarding tender for approved additions to school . Rough sketches of plan of residence and chimneys on letter. Tender appears to have been for verandahs to school and chimney to residence.	QSA 13997
7 May 1879	Tender for repairs of teachers residence.	QSA 13997
July 1879	Memo from Buildings Branch Dept Public Instruction. Teacher's residence under repair. When roof was taken off, termites were discovered.	QSA 13997
20 Sept 1884	Deputation to the Premier to get the size of the school buildings enlarged. The building was 35ft x 17ft now has an average attendance of 112. Suggested that a 12ft extension might be required.	BrC 20 Sept 1884 p4
1 Nov 1884	Tenders invited for additions to state school Bulimba and accepted. Included an addition to the school building, weatherboarding the gables and replacing the shingle roof with iron.	BrC 1 Nov 1884 p2
July 1885	Memo from John Fergusson, Superintendent of School Buildings, regarding teachers residence 'This is a very old building and in bad repair. The walls are composed of only the window and door studs, angle bracing and sheeted with tongued and grooved vertical boarding which in some places has shrunk so as to show daylight and through which rain and wind penetrate. The roof is also bad and leaking and the white ants have come up the sheeting and eaten away some of the rafters and battens. I would therefore recommend weatherboarding one wall which is exposed without verandah, taking off some of the sheeting and refixing same close – boards are quite sound – stripping shingles off roof, replacing the ant eaten timbers and covering roof with 24 gauge gald corrugated iron...'	QSA 13998
17 July 1886	4 acres 3 roods reserved for state school purposes at Bulimba	Qlder 17 July 1886 p96
1886	Reserve file Res.86-44 created for Bulimba State School	MS
22 July 1886	Tenders invited for construction of playshed	Qlder 14 Aug 1886 p245

Date	Event	Reference
1886	School of Arts Reserve designated at north west corner of site	BrC 19 July 1886 p6
August 1886	Tenders received for erection of the plays shed	QSA 13998
1887	School of Arts opened.	SM 14 Nov 1937 p2
25 Jan 1888	Tenders invited for additions possibly the northern wing. Also included a new bell stand, fencing, ant caps in the residence.	QSA 13998
20 Feb 1890	Report regarding the residence includes a hand drawn sketch Shows 4 rooms, 3 along the front (Bedroom, Dining Room, Sitting room) and 1 at the back and a rear skillion containing a kitchen and another bedroom.	QSA 13998
6 March 1890	Tenders invited for improvements repairs and painting. These appear to have included asphaltting the floor of the playshed and improved closets. Suggests that the teachers residence be replaced – it ‘is a very old one and at the present time looks very dilapidated... having apparently been built in three sections. It has been repeatedly repaired owing to damage by white ants, chimneys have been taken down...’	QSA 13998
22 July 1890	Report that CP [?] visited the site and agrees that not much can be done for Arbor Day as the children do not have a proper playground. [If the 1888 additions were for the northern wing, this would have been over play space between the school and the residence.]	QSA 13998
14 April 1891	Letter from School Committee regarding Arbor Day saying that there is no opportunity for tree planting unless the teachers residence is moved’ to enlarge the playground as to leave sufficient space for planting shade trees’.	QSA 13998
May 1891	Arbor Day 1891 – Invitation to be present 1 st May to celebrate Arbor Day. ‘Owing to want of space the planting operations this year will not be as extensive as originally intended...’	QSA 13998
1892	Deputation to the Minister to provide a playground (no place was available) by removing the residence. The Minister approved.	BrC 4 Oct 1892 p6
16 Dec 1892	Tenders invited for painting teachers residence	QSA 13998
30 Dec 1892	Memo from John Ferguson Supt School Buildings, Buildings Branch of Dept Public Instruction – in connection with account received from contractor for the removal of the teacher’s residence ‘at best a very frail structure’.. He had authorised ‘several new bottom plates’ suggesting that the structure was being moved within the site – see later replacement.	QSA 13998
1894	Arbor Day plantings – ‘several trees’. The visitors ‘commented on the healthy site of the school.’	BrC 3 May 1894 pp 2 and 3
May 1895	Report that the residence is uninhabitable and leaking due to single skin gable walls with external studs being exposed to the weather. Moving the building would no doubt have caused problems with racking and opening up of boards.	QSA 13998
1895	Repairs residence £6	AR 1895

Date	Event	Reference
29 Nov 1895	Plan of new residence – 4 room with kitchen wing	QSA 13998
18 June 1896	Tenders let for new teachers residence	QSA 13998
1896	Statistics and expenditure - 'residence per contract: closet pans' £366-15-3. [Second residence]	AR 1896
11 March 1897	Tenders invited for repairs improvement and fencing – includes new residence.	QSA 13998
26 Jan 1899	Tenders let for repairs and painting	QSA 13998
16 June 1899	Report on Material Requirements. Adoption of the 'dry earth pan' system in lieu of the existing cess pits (approved by Minister). Moving the boys closets downhill because of the smell.	QSA 13998
1899	Plans prepared for extension of the school showing addition of new wing to the south perpendicular to the original building – two storey unlined internally with vertical studs. Upper classroom 20ft x 40ft with teacher's annexe. Plans show original school 35ft x 17ft with first addition at the north end [called the gallery room in 1901 report]. Second addition is to the north 20ft wide x 50 ft with a teacher's annexe perpendicular to the original building.	QSA 13998
7 Dec 1899	Spec for additional EC to Boys EC	QSA 13998
28 June 1901	Report on Material Requirements. The average attendance is over 300. 'The site is a windy knob much exposed and teaching is done under difficult conditions.' Note added in red initialled DG [?] 9.7.01 'and commands the finest view existing within 5 miles of Brisbane ...'	QSA 13998
18 March 1903	Plans showing addition of new wing to the south perpendicular to the original building – prints of 1899 proposal coloured..	QSA 13998
4 June 1903	Tenders invited for additions. Included a new wing to the school and extra closet accommodation. – extensions to boys earth closets.	QSA 13998
25 August 1904	Tenders invited for improvements. This included excavation to the west of the new wing, fencing, alterations boys' closets.	QSA 13998
30 Jan 1908	Tenders invited for repairs and painting. This included asphaltting, clearing lantana and a topmast for the bell stand.	QSA 13998
May 1909	Additions, repairs, painting.	QSA 13998
Sept 1909	Tenders advertised for improvements repairs and painting including extension of the basement classroom. Report on proposed improvements by Inspector of Works 12 August 1909 notes that the excavation is 'very desirable, in fact the desirability of removing the whole of the high ground about the school to the level of the existing excavated area is worthy of consideration. The danger of children falling over the embankment is ever present, and the edges are continually breaking away.... The area now involved is about 160 cubic yards.' Also guard fence 'is desired to protect trees, which are to be planted, on the Oxford Street frontage, trees have previously	QSA 13998

Date	Event	Reference
	been planted but destroyed by horses etc...' There is also 'a very large dead tree on the Oxford Street frontage'. Initially the excavation was requested for 'part of high bank in playground to improve ventilation of lower classroom.'	
1910	Department of Education established a Committee on Infant Schools to advise on departmental policy. The committee remained active until 1913. http://education.qld.gov.au/library/edhistory/state/chronology-prep/1901.html	DETE website
July 1910	Tender accepted for forming new playground and drainage. Included excavations. £73-10-0	QSA 13998
14 Dec 1910	Request to remove gallery in infants' classroom.	QSA 13999
26 January 1911	Tenders invited for improvements and repairs.	QSA 13997
1911	Awards ceremony 'As a lasting memorial of the occasion, six trees, indigenous to various parts of the Empire, which had been donated by the Acclimatisation Society, were planted in the school reserve.' The trees were known as the King George's tree.... Etc – various members of the Royal family.	BrC 23 June 1911 p7
5 Oct 1914	Infants' classroom £1801-5	BC
4 Nov 1914	Infants' classroom. Letter from J Hutchinson Builder and Contractor (Manly Qld) regarding the design for the roof sheeting and the set out of framing. An order has been placed with Wunderlich and Steelart. Note from Mr Irving [Andrew Irving architect DPW] asking Mr Ewart for detail. [WJ Ewart also an architect at DPW]	QSA 13997
19 Dec 1914	Letter from Wunderlich regarding samples of 3/16 th inch asbestos cement slates.	QSA 13997
Feb 1915	Photo of new school for infants shortly to be opened. Photo shows high set timber building with gable roof and fleche. Dark stained walls, pale timber trim, central pathway, no fig tree (may be out of frame).	BrC 13 Feb 1915 p13
26 March 1915	Letter from School committee advising that they are running out of tank water due to the dry weather and requesting that water to the new infants' school be brought from the waterworks main at the junction of Lytton Road and Oxford Street.	QSA 13997
April 1915	New infants' school opened on 17 th April 1915 by the Treasurer Hon W H Barnes. Now accommodation for 500 children together with improvements to other school buildings. <i>'The Chairman of the School Committee... pointed out that in the year 1903 the school had only 294 scholars, and the actual attendance on the 13th instant was 473....'</i> Mr Story, Under Secretary for Public Instruction spoke... <i>'he had noticed a certain amount of what might be termed "liveliness" in the district of Bulimba and the Education Department had to respond by expenditure on schools in a number of centres in the District...He</i>	BrC 19 April 1915 p5

Date	Event	Reference
	<i>could assure that Hon. Gentleman [the Treasurer] that the bill for buildings was going to be a large one for several reasons... a stage had been reached when the type of school building which had been built in earlier days had to be discarded in favour of buildings that were better lighted, ventilated and equipped, as a result of the experience which had been gained...'</i>	
1915	Infants' classroom asphalt floors etc. £1969-12-2 Photo shows high set timber building with diagonal asbestos tile roof and fleche, gabled with teacher's room annexe and front verandah, Weatherboards dark colour pale trim, timber stumps two sets of stairs. Front gate and split rail fence. Tree at right.	AR 1915 p28 and photo
1915	Alterations repairs and excavations £407-9-2 (presumably to existing school buildings)	AR 1915 p13
26 July 1916	Memo from Dept Public Instruction to DPW regarding outhouses advising that 'the Urinettes supplied for the infant girls are a constant source of annoyance, in spite of careful endeavours to instruct the children as to their use. I would suggest that they be replaced by ordinary closets.'	QSA 13997
1920s	Distant view from the south	JOL 88030
Dec 1924	Movement for the construction of a swimming pool	BrC 17 Dec 1924 p11
22 Dec 1925	Drawing of proposed extension to head teacher's room.	QSA 13997
25 May 1928	Reserve of land for school purposes 1 acre 16p	BC 25 May 1928 p10
16 April 1929	Letter from school committee about 'the leaky state of the roof of the Infant School; also the windows on the north side of the school allowing the rain to come in during wet weather.'	QSA 125477
20 August 1929	Report 'The ceilings of Infants or lower classrooms which are of fibro cement are in a bad state, washing off and two coats of mill white is required ... The glass in the folding partitions which at present is frosted is scratched...'	QSA 125477
1929	Scrub and lantana cleared and tree guards erected to 'preserve the young trees'.	BrC 5 Sept 1929 p8
12 Feb 1930	Drawing of proposed improvements to playground shows proposed bitumen to the north of the school.	QSA 125477
22 Feb 1930	Memo to School committee from Director of Education recommending bituminising play areas.	QSA 125477
21 March 1930	Part of school buildings are standing on land outside the southern boundary of the proclaimed school reserve (sub 2).	QSA 125477
24 July 1930	Head teacher complaining that the men working on the relief scheme have removed 'so many fine young trees'... 'I had taken pride in preserving the native trees in accordance with your instructions issued in connection with Arbor Day.'	QSA 125477
Dec 1930	Tennis court and basket ball court formed under the relief scheme – had caused 'dangerous banks'.	QSA 125477
1933	DPW memo from construction and maintenance branch '... extensive excavations are and have been carried out on the	QSA 125477

Date	Event	Reference
	roadways right onto the alignments of the school grounds. In Oxford Street the roadway and footpath level have been lowered several feet endangering the fence and leaving the entrance to both double and single gates to Teacher's Residence standing on the edge of a perpendicular bank...'	
1933	Infant school playground originally covered with porphyry screenings. It appears that the steps between the buildings were already there in asphalt.	QSA 125477
The interwar school		
Dec 1934	DPW drawing of proposed rebuilding 22.12.1934 drawn by M.G [Maurice James Guthrie?] and TRG [Thomas Robert Gladwin?]. Shows proposed brick school, 3 storey, H shaped plan with square tower over entrance.	QSA 125477
May 1935	School committee has decided to approach the government for relief labour to improve the school grounds.	CM 21 May 1935 p18
22 June 1935	Request from Committee to remove tank under the Infants School as it is 'a menace to the health of the children'.	QSA 125477
June 1935	DPW plans of new building drawn by GR Beveridge, same as final design.	QSA 125477
Oct 1935	DPW Plans of proposed new brick school. Three storey brick building with fleche. Understorey with two levels above. Middle level 6 classrooms, first floor 7 classrooms, proposed extensions at each end.	EHP Eplan 13958164, 13958153, 13958175
1935	Block plan of proposed new school (blue print) shows original school building of three interlinked blocks at southern end of new building, residence on site of existing tennis court, infants' school as existing and played between residence and infants' school. Asphalt steps lead down from upper platform to infants' school.	QSA 125477
26 Jan 1935	Memo from Public Instruction – attendance for Dec was 551 and average 403 including 186 infants. Suggests that the infants building remain 'for the present' and 'the erection of a section to accommodate 400 be proceeded with.' Est cost £18,785.	QSA 125477
Nov 1935	DPW Plan for proposed retaining walls to Wentworth Parade	EHP
Nov 1935	Tram line along Riding Road completed to Bulimba School of Arts.	SM 17 Nov 1935 p5
25 March 1936	Report recommending works: Repairs to asphalt steps, painting infants school building	QSA 125477
August 1936	Specification for new school	QSA 125477
24 Sept 1936	New brick school £10,000	BC
17 October 1936	Letter from Railways dept regarding supply of 300,000 bricks by Messrs Britains Ltd to be transported to Morningside. Asking for confirmation that Britains would supply.	QSA 125477
21 Oct 1936	Specification for removal of 2 old classrooms to new position on school site. This was for temporary accommodation while the new building was constructed.	QSA 125477

Date	Event	Reference
20 Nov 1936	Plan of Wentworth Parade Boundary to R231 (sub 2 of Resub 2 of sub 2 of portion 4v (main area) and R1337 Sub 2 of Portion 67 (wedge shaped piece to the south)	QSA 125477
11 Feb 1937	Retaining walls £3,180 (included levelling of playground)	BC
Jan 1937	DPW Site plan for construction of retaining walls, also shows new building, tennis court, disused tennis court (in location of swimming pool), infants' school, path to infants' school, toilets, septic tank. Main entrance from Oxford street near present Block D. Line of trees follows top of upper terrace area curving round to the west of the Block A. Long set of steps to infants' school on Oxford Street, also a set to toilets on south boundary (site of present E block).	EHP
Jan 1937	DPW plan of retaining walls on Wentworth Parade and Oxford Streets and tennis court fence. Retaining walls concrete with chainwire fence. Wall on Wentworth Parade proposed to return to east corner of building (this was not shown on the site plan). Gates at south end. Wall to Oxford street returns on Wentworth parade and around tennis court. Returns around east side of future pool.	EHP
1937	'Bulimba State School: Brick Building. Authorised cost £21,965 (in progress). The building now under construction will comprise two (2) stories and basement constructed of brick and concrete and having a tiled roof. Ground floor will provide for six (6) classrooms (240 pupils), two (2) teachers' rooms, cloak rooms, etc., First floor will provide for seven (7) classrooms (272 pupils), one (1) teacher's room, cloakroom etc., Total accommodation 512 pupils. Basement will contain play areas and lavatories for teachers and pupils. A complete drainage system will be provided with a septic tank. The site will be levelled off and retaining walls built on two 92) frontages.'	AR 1937 p7
Feb 1938	Photo of new school from the south east. Bulimba 'famous for views and breeze'. Shows split road in front of school.	CM 19 Feb 1938 p18
7 March 1938	Typescript – 'The new Building, situated on the crown of the Bulimba Hill, faces west and is bounded on the North by Oxford Street, and on the East by Wentworth Parade. The structure is of three (3) stories, built of brick and concrete with cement facings. The roof is covered with the "Marseilles" pattern roofing tiles, and is surrounded [sic] at the centre with a fleche. The new structure replaced the old wooden buildings. The building contains thirteen (13) classrooms situated on the ground and first floors, accommodating five hundred and twelve (512) pupils. A Head Teachers room, two (2) Teachers' rooms and four (4) hat and cloak rooms are also provided. The classrooms on ground and first floors are provided with folding partitions. Lavatories for male and female teachers, boys, girls and infants, also store rooms are situated in the basement, the remainder of this floor being utilised as a play area. A complete	QSA 13997

Date	Event	Reference
	drainage and septic tank installation is included. The grounds have been levelled and graded as required with retaining walls to Wentworth Parade and Oxford Street. Tennis courts have been built on the site previously occupied by the Head Teacher's Residence. The cost of the new Building and retaining walls to date is £25,463.'	
March 1938	'New £26,500 School opened...' Attendance of approximately 500. 'the ceremonies of unveiling a memorial tablet and declaring the school and the playing ground open...' '...It was a fine type of brick building, with every modern convenience, and was built on one of the most elevated sites to be found around Brisbane.' Includes a photograph of an ex student ringing the school bell on a post.	SM 6 March 1938 p5
15 March 1938	BCC permit for septic tank	QSA 125477
11 Feb 1937	Letter from Minister for Works. Approval has been given for improvements at Bulimba SS as follows; 'erection of reinforced concrete retaining walls and steps; levelling of the school ground on the north eastern portion of the site; forming playground and tennis court' estimate £3,180	QSA 125477
19 Jan 1938	Teacher's old residence has been sold by auction and removed from site. Purchased by Mr R Corney of Robinson Street Coorparoo.	QSA 125477
28 Feb 1938	Memo from Assistant District Supervisor advising that the new school building is complete 'but that the grounds are in a very bad state. The ground require to be levelled and excavated and I recommend that Intermittent Relief Labour be utilised for this work. Approval is requested for the sum of £250...'	QSA 125477
10 March 1938	Letter from Inspector of Works advising that the old buildings have been sold. 'Two storey building ' and 'Single storey building and three ECs.' 27 Jan 1938 regarding advertising sale of buildings – two storey building about 40' x 20' exclusive of verandahs, single storey building about 56' x 18' exclusive of verandahs.	QSA 125477
Dec 1938	Old ECs given to the school committee to erect as a shelter shed for the new tennis court.	QSA 125477
1938	Bulimba State School: New school and retaining walls, erection. Authorised cost £21,965. Photo of west elevation with single storey at north end. Foreground bare of planting.	AR 1938 p6 photo p28
Nd (1938 – 1958)	Distant view from north west shows school prominent on ridge.	JOL neg 168416
March 1939	Memo and attachments. 'The existing school reserve contains 5a 0r 30.5 p but most of it is rugged, very precipitous and useless for play purposes. A new brick building has recently been erected and around the building has been excavated and levelled off for assembly and play purposes but the area so levelled is very limited for this large school. The allotments	QSA 125477

Date	Event	Reference
	suggested to be secured contain in all an area of 1r 32.2p and these allotments are also precipitous at the back with a high bank upon the street alignment ...'	
28 March 1939	'Intermittent relief labour now employed' on improvement of grounds to be withdrawn after 30 June 1939.	QSA 125477
April 1939	Memo from district supervisor – cracks in walls and floor are expansion cracks. Window fasteners need adjustment.	QSA 125477
19 May 1939	Memo from district supervisor – Proposed purchase of land – a comparatively small area 'hardly commensurate with the heavy cost.' Not recommended. The land is also very steep and there is not much relief labour in the district. It appears that this land was on 'two additional allotments' (Memo 28 March 1939) resubs 109 and 110 of sub 1 of portion 67 adjoining the school.	QSA 125477
July 1939	Memo from foreman painter 'the cement walls which have been Kalsomined to floor level are now dry and could be painted to the height of 5' with 3 coats of oil paint....'	QSA 125477
July 1939	'Parents of children attending the Balmoral Kindergarten and Nursery School spent a busy time on Saturday assisting with the removal of the school to its new quarters in the old infants' section of the Bulimba State School, which has been made available the Department of Public Instruction. The walls of the school are painted blue, making it an effective background for the furnishings in blue, green and amber tones.'	CM 3 July 1939 p3
Oct 1939	DPW site plan for proposed fencing, shows brick school, tennis court, future basket ball court on disused tennis court, preschool (infants), fencing of upper terrace and paths, basket ball court on middle terrace Barton Parade side. Concrete retaining wall shown on west edge of upper platform crossing over the curved bank. The fence on top is timber. There is also a bank and retaining wall the east of the infants' school.	EHP
6 Dec 1939	Work order the Old Infants School. '.. the above building has been standing empty for a while and various repairs are necessary'.. included joinery, AC tile roof, painting.	QSA 125477
Dec 1939	'Next Friday, the children who attend the Balmoral Kindergarten and Nursery School will hold their "breaking up" party.... The Kindergarten and Nursery school is held in the of infants' school at the Bulimba State School.	CM 5 Dec 1939 p19
11 Jan 1940	Letter from Minister for Works. Approval given for chain wire fencing on the upper portion of the school grounds 'to form a Parade Ground and prevent children falling down embankment. Portion of the fence will be on the boundary line. Eighty two feet of fencing will be supported on retaining walls.'	QSA 125477
26 March 1940	Approval requested for retaining walls and fencing to upper portion of ground recommended to proceed.	QSA 125477
4 April 1940	Letter from survey office about an urgent resurvey of the south western side of the grounds. 'I discovered that a wall was to be	QSA 125477

Date	Event	Reference
	erected on the south eastern corner adjoining allotment 110, ... it would appear that the wall may encroach on Block 110. Attached sketch shows the school (R231), the land on the southern boundary that was purchased when it was found the school buildings encroached (R1337) and the possible encroachment (the neighbour on Wentworth Parade).	
9 April 1940	Cattle getting into the grounds. Also painting of the infants' school which was approved has not been carried out.	QSA 125477
15 April 1940	Letter from committee – 'goats are getting into the school grounds and causing a lot of damage to the gardens...'	QSA 125477
23 May 1940	Work order.' There is a pathway leading from the old Infants School which rises by a series of steps to the playground of the Brick School. The pathway was originally asphalt with a hwd. Kerb or step. The timber of several of the steps has rotted and broken away which has allowed the asphalt to break...' Recommends replacement in concrete. Also there is an old two rail split fence on the Riding Road alignment – suggests straining wires between the rails to 'prevent goats from entering the grounds'.	QSA 125477
31 Jan 1940	Retaining wall and fence £360 [Upper terrace west edge]	BC
7 Feb 1941	Kindergarten vacated old infants school	QSA 125477
20 Oct 1941	Estimate of cost for doors enclosing basement on westerly side. Doors to be of silky oak or cedar hung on Bangor hangers or equal. Upper portion glazed with ¼ inch wired plate glass. [This does not have appear to have been done until 1948]	QSA 125477
29 Feb 1944	Letter from Mr Yeung Koon Yew regarding renting a house in Thorpe street next to the school 'which was formerly a kindergarten' for use by the Chinese Recreation Club of the Chinese Camp (US Army) at Bulimba.	QSA 125477
March 1944	'The old Bulimba State School has been lent by the Director of Education... for the [child-care] centre...' to be staffed by volunteers initially opening 1 day a week.	CM 8 March 1944 p2
15 May 1944	Memo – old EC from old Infants school removed and refixed adjacent to the church hall for use by the Kindergarten Committee.	QSA 125477
Nov 1944	DPW site plan for stormwater drainage showing brick school, tennis court, future basket ball court, 'old school building' new paths, basket ball court on middle terrace.	EHP
12 Dec 1944	Stormwater drainage £155	BC
August 1945	'Bulimba Centre, which was the first to start this community activity [child care centres]The present building cost about £180. A new building estimated to cost about £1500 is in the course of construction on a site granted by the Department of Public Instruction...'	CM 21 August 1945 p4
1946	Photograph of west elevation of Block A	QSA 2884

Date	Event	Reference
1946	Aerial photographs shows Block A, tennis court and trees [camphor laurels?] on cleared platform at top of site. Block C shown with tree – dark foliage to the north east and possibly fig. entrance path west of Block C clearly visible. Basket ball courts cleared but no retaining wall visible. Kindergarten and School of Arts visible. Bottom oval clear and grassed.	BCC H26C
1946	Surveyors note book shows layout in 1946 with modifications in 1957 overdrawn in biro (Swimming pool tuck shop, dressing sheds)	BCC 827c Pp128 - 131
7 Feb 1948	Report by new head teacher: Block A – roof is leaking, many windows are broken, windows need overhaul, taped venetian blinds flap in the wind, one floor is rotted. Infants ('old building') Cannot be effectively locked, windows broken,	QSA 125477
May 1948	Drawing showing proposed enclosure of basement Block A south west side	QSA 585673
23 July 1948	Work order includes repairs to roof and gutters of infants school. Painting of infant school includes pigments – cream, ochre, sienna, umber.	QSA 125477
13 July 1948	Enclosing basement [Block A] £100	BC
1 August 1948	Work order – provision of forms under school	QSA 125477
Nov 1948	DPW block plan showing brick school, tennis court, infants' school, child-care centre (2 blocks), School of Arts, fence around upper terrace and path to infants' school, surface drain and diversion wall perpendicular to infants' school extending to Barton Parade, Sports field on Riding Road, hand drawn excavations for more courts on Barton Parade middle terrace.	Eplan 13958087
Nov 1948	Same plan as above with proposed swimming pool hand drawn over	Eplan 13958065
Nov 1948	Same plan as above with swimming pool and dressing room drafted, existing basket ball courts increased to two courts on middle terrace to Barton Parade, proposed junior practice area and additional paths. The area above the main entrance from Oxford Street (now Block D) is a grassed area with two trees [the existing camphor laurels?]	Eplan 11054186
Nov 1948	Same plan as above coloured in to show proposed asphalted area on whole of upper terrace late adjusted to only that area to the west of the school and tennis court.	QSA 125477
3 Dec 1948	Report on Ground improvements. Present enrolment 500. School reserve 5 ac 0r 30.5p 'comprising mainly rough bush land with a fall of over 100', much of the gradient being of the order of 1 in 3 and is more or less covered with sparse undergrowth and small timber but with little grass except on the lower portions. The shaly friable soil is badly rutted from the action of surface water.'... Approximately 1/3 acre has been alienated for the child care centre and the Infants school is unused due to lack of staff. Recommends bitumen on play area around school.	QSA 125477

Date	Event	Reference
10 Feb 1949	Letter from Committee asking if the plan of the proposed layout of the grounds submitted a year ago has been addressed.	QSA 125477
May 1949	Report by district supervisor 'Apart from the small area surrounding the school on the highest terrace, the children have no playing area except the very small basket ball court and the lower area near the tram line at the foot of the hill'.... Proposal to build 2 tennis courts and resurface the basket ball court. Recommended approval.	QSA 125477
July 1949	District supervisor asked to investigate laying down of two tennis courts	QSA 125477
3 Aug 1949	Ground improvements £300	BC
19 May 1950	Removal of the flagpole	QSA 125477
13 July 1950	[Balmoral High School] 21 acres and 9.5 perches in parish of Bulimba was reserved for State School Bulimba (R. 1608) and was placed under the control of the Secretary for Public Instruction in Queensland. Reference no. Res.8410	QSA 125477
1951	Aerial photo much as 1946. Basket ball courts grassed. Fig tree at Block C visible. Tree visible in front of Block A on Wentworth Parade.	BCC 337
19 Feb 1951	Report by Chief Architect...Number on roll is 598 expected to increase to 625. 'the small building formerly known as the infants school is now being occupied by Grade VII (about 24 pupils), but is expected to return to its former function in 1952 with a probable attendance of 120.' The only play areas are; 4538 sq yds gravelled area around main school, 858 sq yds gravelled area around infants' school.... 'The existing access from the main playground to the Infants' School needs extensive repairs and the rough natural path from the level area at this school to the small gate in the Oxford Street alignment some 85 ft to the east of the boundary to the Child Care Centre needs proper forming and finishing.... Recommends site of swimming pool closer to the basket ball court to make excavation easier and preserve shade trees.	QSA 125477
Jan 1952	Plan showing water diversion wall from south west corner of infants' school across site to the south boundary and a path from below the infants' school leading to the sports area coming out near the Child Care Centre. The wall was concrete with a 'pitched and grouted stone slab catchment drain' above and was approved 3 April 1952. Also approved was repairs to Kwire fencing above the basket ball court and construction of the path to the sports area – 250 ft long 4 ft wide 26 steps... more were required when it was built.	QSA 125477
19 Feb 1951	Block Plan dated 1948 marked up to show path around back of infants' school and excavations at south western corner to adjust excavated terraces. Also alternative position for pool.	QSA 125477

Date	Event	Reference
3 April 1952	Water diversion wall £1566 [from south east corner of infants' school and across site to Barton Parade?]	BC
21 June 1952	Quote for seats around fence on western perimeter of upper play area around Block A.	QSA 125477
1 July 1952	Memo on inspection of Infants School....'considerable sagging has taken place in roof timbers.... There is also some settlement in the blocks.... There is ample evidence on the ceilings that a considerable number of leakages occur during wet weather, the VJ pine ceiling boards are rotten in many places due to leakages in the asbestos cement slates.....' Work order notes 'There are at present two folding type partitions dividing the old building into three classrooms...' 'I again inspected the building with a view to removing the present 2" x 1" battening and providing standard size roofing battens that a fibro roof may be fixed. A ventilator or fleche in the centre of the roof should be removed to allow the roof sheeting to be carried through....The roof has sagged in places and it will be necessary to lift the framing in places to level the ridge.' Super six Fibrolite was used. It appears that the fleche was removed. The interiors were painted.	QSA 125477
Dec 1952	DPW plans for reconstruction of infant school, shows high set timber framed building containing 3 classrooms in original configuration replacement of diagonal asbestos cement slates with corrugated asbestos, fleche to remain, alterations to window joinery (rehanging pivots as casements) and modifications of folding doors between classrooms. The roof framing was made more secure. [There was not money to implement until 1954.]	Eplan 13958120 and 13958131
1953	Committee submitted proposal for Ground Improvements comprising swimming pool, tennis courts and basket ball court. Drawings prepared by Cardno and Davies, civil engineers. The site of the swimming pool was chosen to be on land which was not useful for building and was close to lavatories. The sites for the basket ball and tennis courts had been 'partly formed.' Cardno and Davies plan dated 4 July 1950 shows the swimming pool to the west of the Infants School, with dressing rooms under. The existing site has 4 shade trees. The basket ball court is shown with two tennis courts to the west.	QSA 125477
1954	State School (infants) Alterations and improvements £1,715	AR 1954 p14
14 April 1954	Inspection report... 'the old building is used by 97 children and it would seem that it will continue to be used. It leaks very badly in wet weather....It is a considerable distance from the main building and it is considered that separate lavatory accommodation should be provided...'	QSA 125477
April 1954	Memo re accommodations and numbers in the various classes anticipated attendance for 1955 of 770 – 780. Head teacher plus 15 teachers. The infants' school is used for normal classes. One	QSA 125477

Date	Event	Reference
	classroom is proposed to be furnished as a library and reading room.	
24 June 1954	Letter from Minister for Public Works... approval for repairs to infants' school comprising 'reconstruction of existing roof, improvements to lighting and ventilation and alterations to folding door partitions....'	QSA 125477
August 1954	DPW plan proposed septic for infants' shows toilets installed under infants' school.	Eplan 13958076
August 1954	Excavations for swimming pool underway	CM 11 August 1954 p13
17 Sept 1954	Work order for replacement of 2 sets of stairs at Infants School	QSA 125477
17 Nov 1954	Tenders received for erection of dressing sheds at pool	QSA 125477
26 Nov 1954	Permission for the Bulimba Child Care Centre to occupy was in August 1944. No survey was made and no land excised.	QSA 125477
March 1955	Swimming pool opened	EHP
14 April 1955	Report that the construction of the pool, dressing sheds and seating have been completed	QSA 125477
1955	Aerial photograph in hall of Block A (first floor) shows Blocks A and C, tennis court fence and much erosion on site facing Barton Road. Lower oval formed.	School collection
10 June 1955	Letter to DPW requesting the old wood stumps being replaced by concrete on the infants' school.	QSA 125477
1956	Proposed hat and bag racks A block	Eplan 13958098
18 Dec 1956	Quote for erection of lunch bar. Attached drawing and sketch suggests it was at the south east corner of the swimming pool and built of timber with a skillion roof.	QSA 125477
June 1957 (revised)	Contour plan shows brick school, tennis court, swimming pool, infants' school, childcare centre, school of arts, steps to infants' school from upper terrace, basket ball court (called tennis court) on Barton Parade.	BCC detail plan 1217
27 March 1957	Reconditioning steps and path £150	BC
24 June 1954	Reconstruction of infants' school £1715	BC
9 Dec 1954	Septic for infants' school £1660	BC
April 1955	Work order: Repairs and repainting exterior Block A. Includes limewashing and oil paints including burnt umber, burnt sienna, ochre and Butex lead free Bristol Green.	QSA 125477
17 Sept 1955	Septic for state school £1919	BC
15 Nov 1955	Addition of two classrooms [north end of Block A]	BC
June 1956	Block A - Eaves gutters renewed and external painting	QSA 125477
October 1956	Construction of lunch bar building approved – building later removed to Balmoral High.	QSA 125477
1957	New two storey classroom addition to northern end of Block A	EHP
March 1957	Fig trees near infants' school lopped where they overhang footpath – the school wants to keep them as they are excellent shade trees.	QSA 125477

Date	Event	Reference
July 1957	Work order for extension of verandah enclosure to infants' school with weatherboards to sill height and casements above.	QSA 125477
October 1957	Work order - Provision of additional sealed area approved. The area recently completed not large enough. Present attendance 822 pupils.	QSA 125477
1958	Additions brick £9,053 [Block B] Also photograph of two storey classroom addition to northern end of Block A. Mature tree in foreground (existing camphor laurel?) and timber fence to tennis court. Parade ground bare.	AR 1958 p18 Photo p48
6 March 1958	Work order - Rain blown onto front verandah of Infants school 'both ends of this verandah have recently been enclosed and are in use as temporary classrooms. The top of both stairs was not enclosed and a panel each side of approximately 20" was also left open.....I recommend that a pair of doors be installed at the top of each staircase and double fibro panels on both sides of the stairs.' Approved.	QSA 125477
20 October 1958	Request estimates to cut and fill two areas formed some years ago for additional tennis courts so as to form one area approx. 120' x 120'. Extend present basket ball area for two courts.	QSA 125477
Nov 1958 Feb 1959	DPW plan of Block B, high set on lozenge shaped concrete piers, tile roof, face brick, open web steel trusses. 4 classrooms 21 ft wide eastern one larger, colour scheme. Also section of site plan showing new planting SW of Block B. Details of trussed beams.	EHP Eplan 11053977 11054164
14 Nov 1958	Discussion about the location of the proposed additions – report by Chief Architect. The building is located along the fence dividing the boys and girls play areas and would have a covered play area under. There was concern it would obstruct play areas.	QSA 125477
17 Nov 1958	Coloured plan of Block B showing initial construction of only three classrooms. Includes colour scheme.	QSA 125477
7 April 1959	Request to enclose western end of front verandah of infants' school	QSA 125477
29 April 1959	Health service room and additions £10,312 [Block A]	BC
1959	Block A health room in understorey	Eplan 11054054
1959	Block B proposed tuck shop in understorey	Eplan 11054065
1959	Construction of Block B	EHP
1959	Additions £10,312 (presumably Block B)	AR 1959 p16
Ca 1960s	Distant view from the north west shows Block A prominent	JOL neg 168423
1960	Photograph of Block B shows high set timber building with tiled roof, metal balustrade on open web steel trusses and lozenge shaped columns. Camphor laurel branches (?) in foreground.	QSA 15406
12 Feb 1960	Additional toilets	BC
1960	Alterations and additional lavatory accommodation £12,170	AR 1960 p14

Date	Event	Reference
1960	Aerial photo shows Blocks A, B and C, tennis court and swimming pool area (swimming pool not clear). Levelling of basket ball courts visible and upper oval.	BCC 227
1960	Chainwire fences replaced	QSA 125477
July 1961	Low retaining walls required on Riding Road and Barton Parade frontages.	QSA 125477
7 Sept 1961	Report on inspection of work carried out by Dept Main Roads. 'Two areas have been levelled off and contained by retaining walls. The surfaces have been finished with decomposed granite...these areas can be handed over to the School Committee who can then go ahead with the construction of basketball courts, tennis courts or free play areas.' Earthworks substantially completed for a road from lower level to each of the upper levels. 'The Main Roads Department constructed a long flight of concrete steps from the level of the higher of the two new levelled areas to the school parade area on top of the hill. There is left an open undeveloped area between the steps and the higher levelled area....' Previously recommended a retaining wall on the northern and eastern boundaries of the low free play area which abuts Riding Road and Barton Parade. Northern boundary the responsibility of the school of arts.	QSA 125477
1 May 1962	Conversion to council sewer	BC
10 May 1962	Letter from Committee 'Once again we have to report that the breeze block retaining wall between the upper and intermediate levels in the lower playground has blown out due to water pressure behind the walls....'	QSA 125477
1962	A good deal of correspondence regarding repairs to swimming pool including repair of concrete 'concourse slabs' which have settled and installation of a filtration plant.	QSA 125477
29 March 1962	Expenditure of £4054 approved for road access from lower to upper area, treatment of steep land and repairs to retaining wall	QSA 125477
March 1963	Additional seating proposed in swimming pool area	QSA 125477
June 1963	Area in front of Infants school sealed	QSA 125477
20 June 1963	Letter from Committee advising that they have had the tennis court resurfaced.	QSA 125477
2 Oct 1963	Letter to DPW – 'In 1961 your Department constructed two terraces flanked by slope paving walls, which gave continual trouble by a series of failures' Have failed again	QSA 125477
Nov 1963	Work order for repainting interior of infants' school. One classroom is to be used as a library.	QSA 125477
Oct 1964	DPW drainage site plan shows Blocks A, B and C, tennis court, swimming pool, child care centre, school of arts, basket ball courts, ovals, paths including 'old pathway' to Oxford Street and some trees.	Eplan 11802329

Date	Event	Reference
1964	Sewerage connection to Block A	Eplan 11053955
1964	Sewerage connection to Block C	Eplan 11053966
Oct 1964	DPW plan showing sewerage connection to swimming pool. Details of pool and dressing sheds and 2 trees also shown.	Eplan 11053944
1964	Aerial photographs shows Blocks A, B, C and pool, retaining walls on basket ball court and upper oval. Grass or bitumen to area north of Block B at entrance from Oxford Street.	BCC 417
August 1964	[Balmoral High School] Gov Gazette 1 Aug 1964 p 1458 Gazettal Bulimba SS R1608 21A 0 R 9.5 P date of order in Council 13 July 1950. Adjacent vacant crown land 2 roods 32 perches added to the reserve. The new description to be R1608 21 acres 3 roods 1.5 perches portion 414 on plan SI 2086.	QSA 125477
28 Jan 1965	Sewerage connection and swimming pool connection £3128	BC
1966	Swimming pool sand blasted and painted	QSA 125477
1966	3 fig trees ' in the front or north eastern grounds of the Infants Section' to be lopped to a height of approximately 22 feet above ground level and 9 feet radius from the main trunk	QSA 125477
18 March 1966	Diagram of under storey of Infants with new seating.	QSA 125477
26 May 1967	Sketch of proposed security to top of steps block B.	QSA 125477
15 Nov 1967	Letter from P&C regarding proposed toilet block in the swimming pool area.	QSA 125477
Dec 1967	Work order for concrete plaster repairs and waterproofing to window sills in classrooms. Cracks had developed 'in the base of the concrete reveals on the inside of the wooden sills to six sets of windows each approx. 6'6" wide in classrooms 13, 14 and 16 top floor and and similar to one set of windows in the vestibule, first floor near the stairway southern end.' Windows on eastern side of the building. 'it is recommended that the above windows have the broken concrete plaster chipped away, a hoop iron weather strip fixed along the inside vase of the sills then the concrete plaster reveals rebuilt.'	QSA 125477
Ca 1968	Interior of block A painting spec. Kalsomine paints removed and replaced with enamels.	QSA 125477
April 1968	Spec and drawing by Cardno and Davies for construction of brick toilets at the rear of the dressing shed for the P&C.	QSA 125477
16 May 1968	Letter from VJ Creagh - ... there is a big dead tree located in the parade area at the Infant School and will soon become a risk... Originally a beautiful shade tree, it was heavily lopped, possibly out of season, and died. It has been dead some time now...'	QSA 125477
June 1968	Work order for removal of dead tree from 'the bitumen sealed area in front of the school, together with a considerable amount of dead wood in several similar type trees growing in the grounds at Bulimba Infants School. The dead tree a weeping fig would appear to have been strangled by bitumen sealing of the	QSA 125477

Date	Event	Reference
	parade ground in which it stands and trees containing dead wood are the same variety, two only on the western side and one Moreton bay fig tree on the high bank on the eastern side of the bitumen sealed parade area.	
27 March 1968	Dept Education inspection return. Infant school badly in need of painting inside and out. 'Bank area on eastern end of school being cleared and planted with shrubs. Hilly section at rear of school being terraced grassed and planted with trees and shrubs while area between school and Kindergarten being beautified with grassy areas and shrubs.' Last Arbor Day 19 May 1967. During the last year the P&C have spent about \$1000 'terracing and beautifying hilly school Grounds below and at rear of School building.'	QSA 125477
24 Sept 1968	Work order for cleaning down and painting RSJs under Block A – they were not previously painted and are now rusting.	
Ca 1970	Sketch drawing showing provision of senior teachers office on stair Block A (which stair?)	QSA 125477
1 Jan 1970	Work order for provision of stock room Verandah Infants' Block – western end room approx. 12ft long by 6ft 10" wide.	QSA 125477
5 Aug 1970	Clerk typists accommodation floor \$2856	BC
8 Feb 1971	Resealing parade area \$1781	BC
27 Feb 1973	Remodelling Block A , drainage plan \$10750	BC
1973	Remodelling Block A north end for library	Eplan 11054175
22 June 1978	Remodelling for remedial resources room Block B plans \$9230	BC
June 1981	DPW plan of Block C understorey and outdoor play area. Fig trees shown.	Eplan 11802318
July 1981	DPW architectural site plan. Shows general layout including wooded areas, outdoor plan area west of Block C, covered line between Blocks A and B.	Eplan 10703737
July 1981	DPW plan shows remodelling of Block C including removal of folding doors, new partitions, enclosure of verandah and demolition of much of the wall between classrooms and verandah.	Eplan 11802307
3 Feb 1983	Remodelling Block C to provide preschool \$55,300	BC
4 July 1986	Upgrade staff room	BC
1988	Block A upgrade of toilets ground floor	Eplan 20379546
Feb 1994	DPW (admin services) site plan showing addition of D block which was relocated from Hatton Vale school. Includes pathways.	Eplan 10703759
1996 and 1997	Plans of Block A (Brand and Slater) classroom upgrade, internal modifications	Eplan 11327228 11327250 11327239
1996	Plans of Block B (Brand and Slater) classroom upgrade, internal modifications	Eplan 11327261

Date	Event	Reference
1996	Site plan (Brand and Slater) classroom upgrade, proposed modular west of Block C	Eplan 11327283
Dec 1997	Project Services contour and detail survey shows trees and levels around Block C	Eplan 11590029
Dec 1997	Project Services contour and detail survey shows trees and levels around Blocks A, B and D	Eplan 11590040
Sept 1998	Project Services site plan showing new Admin and Resource Centre (Block E)	Eplan 15125737
Sept 1998	Project Services floor plan showing new Admin and Resource Centre (Block E)	EHP Eplan 15125759
1999	Drainage site plan	Eplan 17353215 17636927
1999	Better schools program classroom upgrade of A block	Eplan 17636916 17636916
1999	Block A classroom upgrade demolition plan Electrical plan	Eplan 17637125 17637180
1999	Site plan showing removal of trees behind Block B for a timber classroom and new timber classroom (Block B future extension marked on)	Eplan 17704159 17704170
1999	Electrical site plan	Eplan 17704269
2000	Proposed link between Blocks E and B	Eplan 17773360
2000	Building Better Schools Block A layout Block B layout (extension complete)	21502767 21502778
2001	Composting toilet block	Eplan 17331589
2004	Block A upgrading amenities, understorey	Eplan 19494662
2006	Hire building behind Block A	Eplan 20036599
2006	F Block (10 GLA) was designed by Biscoe Wilson Architects in 2006 and was completed June 2007. The Builder was Northbuild Constructions.	BW
Sept 2008	Drainage plan no 63179 in association with Biscoe Wilson Architects for new General Purpose room (OHSC building)	Eplan 22329395 22329406
2009	Out of School Hours Care (OHSC) Pavilion was designed by Biscoe Wilson Architects in 2009 and was completed in 2010. The Builder was Elffe Developments Pty Ltd.	BW
2009	Proposed hall (M block) hydraulic services site plan Ground floor plan drainage.	Eplan 22568260 22568282

Date	Event	Reference
	The BER Hall also contains 3 GLA's. The hall was designed by Biscoe Wilson Architects in 2009 and completed in June 2010. The Builder was Badge Constructions.	24862288 BW
2012	Proposed demountables (N block) type T2010 site plan	Eplan 25234880
2013	B Block undercroft was enclosed and the tuckshop expanded and refurbished in 2013, completed in 2014 The work was designed by Biscoe Wilson Architects. The builder was Luscombe Builders. A heritage exemption was obtained for the partial enclosure.	BW
2014	In 2014 a metal framed shed was constructed on the lower oval, to replace a smaller metal framed shed in the same location. This work was designed by Biscoe Wilson Architects. The Builder was Elffe Developments Pty Ltd.	BW
2014	In 2014 the undercroft of A Block had some roller shutters installed in brick openings on the east side and the area under the west stairs was refurbished as the OHSC office. This work was designed by Biscoe Wilson Architects. The builder was Luscombe Builders.	BW

2.3 Specification for Block A

(QSA 125477 Box 24)

The following is a summary of the specification for Block A:

- Site preparation – original school house removed and re-erected elsewhere on site as a temporary school room. Site 'to be levelled and graded'.

Concrete and Masonry

- Concrete foundations, retaining walls, window sills and lintels. Sills to be provided with iron water bar. Faces of concrete beams to be kept back for finishing coat. Reinforced concrete beam at ground floor level 1ft 6ins deep and full width of wall *'to form base mould to external walls and rebated as required for frames.'* Reinforced concrete beams under concrete floors to be poured with floor slabs. Concrete beams required over stair halls and cloakrooms and across open corridors. Suspended reinforced concrete floors include girls' lavatory floor in basement. Reinforced concrete floor in whole of basement.
- Precast concrete templates under all RSJs and roof trusses.
- ...*'openings where woodwork is to be fixed to have coke breeze and cement blocks..'*
- Concrete floors to be finished with 2 Portland Cement: 3 fine gravel $\frac{3}{4}$ in thick with carborindum powder added to give non-slip finish. Finishing coat to external stairs to be mixed with black oxide grooved with 2 v grooves $\frac{3}{8}$ th in wide x $\frac{1}{4}$ inch deep on treads.
- Internal concrete staircases *'to be finished with moulded nosing and fillet returned at end of treads. Holes for balusters to be cast in steps.'* Steps to have 6 ins margin line also carried down corridors. External stairs similar. Landings to be 7 ins thick.
- Cast reinforced concrete cornice to 3 pediments fixed with holding down bolts and chased for flashings. Cast reinforced coping to parapet walls.
- Steel beams under concrete floors or brick walls to be encased with concrete when the floors are poured.
- Concrete urinals in Boys and Infants' lavatories. Slabs to be white 'Carrara' $\frac{7}{16}$ th – $\frac{1}{2}$ inch thick on rake.
- Concrete blocks stand 4 ins above floors to support door studs and frames in lavatories.
- Brickwork to be laid in mortar 1 Portland Cement: 3 sand [note Portland cement much weaker than modern cement – this would have been more similar to a composition mix in strength]
- Facing bricks double machine pressed *'brickwork in external pilasters to be dark red in contrasting colour with other work'* – note bricks may have been supplied by Britains.
- English bond with struck and cut joints on face work except in play area where joints are to be flush. Hoop iron bond built in every 8 courses and at levels of lintels and sills.
- Hollow walls [cavity walls] to be stretcher bond on outer leaf tied to inner leaf with galvanised cast iron ties and air bricks to vent cavity.
- Horizontal damp course $\frac{3}{8}$ th inch thick of *'Val de Travers asphalte'* or other approved. Lay similar in pediments and parapet walls.

Plaster

- Materials Portland cement, fine silver grit, fat lime slaked at least one month prior to use.
- External mix 1 cement: 3 sand [note that cement would have been much weaker than today's mix] 'Pudlo' added for waterproofing.
- Thickness $\frac{5}{8}$ th inch externally and internally first coat $\frac{1}{2}$ inch second coat laid on thin.

Metalwork

- Lead covers over lintels in hollow walls.
- Iron wall plates to support floor joists *'tarred and sanded and properly flushed up in cement.'*
- RSJs of British or Australian manufacture to be on bearings of lead on concrete templates. RSJs over accordion partitions to be drilled for securing wood plates.
- RSJs – 15 No 14 x 5 ½ inch by 40 lbs over Basement, 9 No 14 x 5 ½ inch by 40 lbs over ground floor, 2 No 12 x 5 ins x 30 lb over first floor, 4 No 7 x 3 ½ inch by 15 lbs to staircase landings.
- Internal balustrades – balusters to be wrot iron ¾ inch square run in lead. 3/8th inch WI core rail at top. Intermediate raking rails 1 ½ x ½ inch. Newels cast iron 4 inches square. Handrail 4 x 3 inch maple including bosses. External balustrade similar with 2 x ¾ inch WI handrails.
- Wire grilles between cloakrooms and staircases and lavatories and cleaners room to be 10 gauge galvanised woven wire 1 ¼ inch mesh in welded ¾ in diameter galvanised frames.
- Glass louvres in basement to be protected with hinged covers of woven wire mesh.

Carpentry

- All timber built into walls to be well tarred.
- Floor joists 6 x 2ins hardwood. As pugging fix 5/8th inch rough hardwood sheeting to sides of first floor joists with asphalt tarred felt over and 3 ins clean engine ashes.
- Classroom and teachers room floors to be 4 x 1 inch t&g Crows Ash.
- Roof to be Marseille pattern roof tiles with lightening conductor of copper tape with copper tips fixed to ridge.
- Roof trusses pine. Tie beams 8 x 4ins, principal rafter 6 x 4 ins, purlins 6 x 3ins common rafters 4 x 2ins spaced at 2ft centres projecting 18 ins at eaves. Ceiling joists 4 x 2ins at 2 ft centres. Roof battens 2 x 1inch.
- Eaves fascias 9 x 1 ¼ inch dressed hardwood with 3 x 2ins moulding under spouting.
- Eaves soffits to be lined with fibro cement with cover fillets.

Rainwater goods

- Eaves gutters 8 inch ogee galv iron moulded square backed on WI brackets. Secret gutters and flashings of lead. Box gutters behind parapets of lavatory block to be galv iron. Galv rainwater heads. Bends from gutters to wall to be copper, the rest of the downpipe to be 6 x 4 inch cast iron.

Fleche and louvres

- Fleche to be octagonal framed in timber with louvres shaped of 24 gauge galvanised iron to 6 x ½ inch at 60 degrees riveted to galv frame. Whole of exterior of fleche to be covered in galvanised steel with base from sill to main roof covered in terracotta shingle tiles fixed to boarding.
- Galvanised iron louvres to be fixed in gable apex

Ceilings

- Ceilings to be 3/16th inch fibro cement fixed to pine battens 3 x 1 inch with cover pieces 3 x 5/8th inch mitres at joints and 6 x 1inch at margins. Ceiling vents to be covered at back with perforated zinc gauze.

Joinery

- Door frames 5 ¼ x 3 ins or 4 ½ x 3 ins where walls are not plastered. Transoms 4 ½ x 3 ins. Frame to entrance door to be silky oak. Jamb linings 4 ½ ins. Entrance doors silky oak with top pane glazed in white arctic glass, other doors of pine.

- Window frames to casement windows to be similar to door frames. Jambs to louvre frames to be 7/8th inch silky oak beaded with stop grooved for louvres. Casements to be silky oak hung on brass hinges with brass casement stays.
- Window sills 6 x 3ins grooved for water bar. Water bars 1 ¼ x 1/8th inch bedded in white lead.
- Box frame windows for windows to classrooms from corridors to be built of pine with fanlights. Finish at outside of frame to be ¾ inch scotia. Window sashes to be pine.
- Architraves 4 x 1 inch pine '*stock pattern*' except to both sides of accordion partition openings and to inside main entrance doors where architrave is to be 6 x 1 inch (silky oak in entrance vestibule).
- Entrance vestibule to have 4 ins moulded cornice.
- Skirtings to be 7 x ¾ inch moulded with 7 ¼ x 4 ¼ skirting blocks.
- Picture rail 3 x 1inch moulded.
- Hat and coat screens in cloak rooms hardwood frames filled with woven wire.
- Seats in play area 9 x 1 ½ inch hardwood fixed to flat steel supports.
- Accordion doors on patent track rollers and hangers (*McCabes* or equal).
- WC partitions and screens timber and wire mesh.
- Fittings for hyloplates.
- Doors hung on brass hinges with bolts top and bottom and brass cabin hooks.
- Timber furniture included in spec.

Paint

- Oil paint colours – *dark stone (light drab)*, *light green*. Lime wash outside made of glue size, Portland cement, Plaster of Paris and yellow ochre '*to give a pale cream stone colour.*' Interior plasterwork above margin line painted with '*Majora*' water paint [like Kalsomine] Mill white ceilings.
- Handrails French polished, entrance doors stained and copal varnish.
- Lettering on doors in black.

Services

- Services include water, gas and electricity.

2.4 Bibliography

Publications and periodicals

Department of Works Annual Reports for 1915, 1937, 1938, 1954, 1958

Watson, Donald and Judith McKay, 1984, *A Directory of Architects to 1940*, University of Queensland Library, St Lucia.

Unpublished reports

Burmester, Paul, Margaret Pullar, Michael Kennedy, November 1996, Queensland Schools. A heritage conservation study. A report for the Department of Education.

Project Services 2010, Roma Government Complex Conservation Plan prepared for the Accommodation Office, Department of Public Works, Brisbane.

Queensland State Archives (by item ID)

Department of Education administration files: 13997 (1871 – 1938), 13998 (1882 – 1910), 13999 (1910 – 1921),

Department of Education Register of Schools Volume 2 13621 (1860 – 1878)

Department of Public Works Batch files 125477 (1929 – 1970),

Department of Works batch cards 125477

Plans of retaining walls 588857 - 588859 (1937), 588856 (1940),

Proposed fencing 588855 (1939)

Plans of new building 585674 585676, 588860 - 588862 (1935, 1936)

Plan of basement enclosure 585673 (1948)

Drawing of Playshed 328910 (1886)

Plans of other schools: East Brisbane 585857

Newspapers

Brisbane Courier 1866 - 1929

Courier Mail 1935 - 1954

Morton Bay Courier 1859

Queenslander 1884 - 1886

Sunday Mail 1937 – 1940

Plans and maps

Plans of Bulimba State School held by Department of Housing and Public Works electronic database e-plan.

Plans of Bulimba State School held in Department of Environment and Heritage Protection research file 601874 which are held by the Department of Housing and Public Works but are not in QSA or in e-plan.

Brisbane City Council Department of Works Detail Plan 1217 and Survey field book No 827c 5 Nov 1946 revised 24 June 1957.

Maps held by the Museum of Mapping and Surveying: Survey 1857 S151824 sheet 2, Survey of Reserve 1860 N25.1, Cadastral map, 20 chain, Moreton Series Sheet 1, Cadastral map for Brisbane 8 chain, 1907, Cadastral map Brisbane suburbs and streets 1927.

Maps published on <https://data.qld.gov.au/dataset/historical-cadastral-map-seriesqueensland>

Images

Brisbane City Council aerial photographs H26C, 337, 227, 417, 323.

John Oxley Library

Queensland State Archives images 2884 (1946) and 15406 (1960)